

# County Hunter News

September 2020  
Volume 16 Issue 9

Welcome to the On-Line County Hunter News, a monthly publication for those interested in ham radio county hunting, with an orientation toward CW operation. We also cover some park chasing activities these days. Contributions of articles, stories, letters, and pictures to the editor are welcomed, and may be included in future issues at the editor's discretion.

The County Hunter News will provide you with interesting, thought provoking articles, articles of county hunting history, or about county hunters or events, ham radio or electronics history, general ham radio interest, and provide news of upcoming operating events.

We hope you will enjoy the County Hunter News. Feel free to forward, or provide links. Permission is given for copying or quoting in part or all provided credit is given to the CHNews and to the author of article.

CW County Hunter Nets run on 14.0565, 10.124.5, and 7056.5, with activity occasionally on 3556.5 KHz. Also, there is SSB activity now is on 'friendly net' 7188 KHz. The CW folks are now pioneering 17M operation on 18.0915. (21.0565, 24.9155, and 28.0565 when sunspots better). Look around 18136 or for occasional 17M SSB runs usually after the run on 20M SSB . (21.336 and 28.336)

You can see live spots of county hunter activity at [ch.W6RK.com](http://ch.W6RK.com)

For information on county hunting, check out the following resources:

The USACA award is sponsored by CQ Magazine. Rules and information are here:

<http://countyhunter.com/cq.htm>

For general information FAQ on County Hunting, check out:

<http://countyhunter.com/whatis.htm>

MARAC sponsors an award program for many other county hunting awards. You can

find information on these awards and the rules at:

<http://marac.org/awards.pdf>

There is a lot more information at [www.countyhunter.com](http://www.countyhunter.com) . Please check it out.

Back issues of the County Hunter News are available at [www.CHNewsonline.com](http://www.CHNewsonline.com)

De N4CD, Bob Voss, Editor (email: [telegraphy@verizon.net](mailto:telegraphy@verizon.net) )

## Notes from the Editor

### N4CD Rumblings

**1 ) Sunspots** – Things sort of peaked up a few times during the month, but still many days with no sunspots. Maybe 8-10 days with a sunspot group or two. Conditions went from mostly miserable to very good a few times, but mostly sat at previous levels. The cycle is trying but not succeeding to any degree yet.

**2 ) Gas prices** – most of the month were slightly below \$2 here but rising a bit at month's end. Can't complain.

**3 ) Weather** - there's been some wild weather. Much of the nation sizzled with 100 F temps, some had major storms and wind (IA), a few tornadoes, lots of rain in places – and at the end of the month, a hurricane about to clobber TX/LA. A typical summer. Soon it will cool off a bit. Otherwise, just hot in TX, NM and AZ. Wildfires in CA of major proportions. Fall is just around the corner.

## On the Road with N4CD I

Sitting home during the pandemic is not much fun when you're a county hunter mobile.

Ed, K8ZZ, seems to live on the road these days – putting out the counties up north. Hope he is 'staying safe' as far as possible. Here, as a 'vulnerable senior', I'm a bit leery of long trips even to rural areas. Things are not under control and younger folks don't always take this seriously.

The summer was progressing. After the solstice in June, days were getting shorter. Already the sun was coming up a half hour later. I'd rather be on 3 week long trips in the summer, but not this year for sure.

However, one way to relieve frustration is to take a short trip with a night or two of motels. Recently, both WWFF (World Wide Flora and Fauna) and the Parks on the Air group (POTA) added a good number of 'wildlife management' and related areas in Arkansas. Thanks go to the state coordinators and database folks at each for 'getting it done'. There are over 5200 parks in WWFF and 7300 in POTA to run these days. For WWFF, the minimum size is 5,000 acres. For POTA, there is no minimum size limit so you'll have smaller ones down to a few dozen acres.

I've pretty much done most of OK – just a handful left to run – most way out in the boonies. No sense going there to finish off those six remaining that would take 500 miles to cover – or more. Did a bunch before/during the OK QP. So that left Arkansas.

### **Saturday – August 1**

I would have liked to leave on Friday but there were big storms brewing along the route, so it was just a bit after 6am when I departed home for AR for a couple day trip on Saturday. More hunters are around on weekends. Took 3 hours at 75 mph on I-30 to get to Texarkana and a bit more south to get to Sulphur River WMA in Miller county, AR. It's 15 miles south of Texarkana.

Ed, K8ZZ, was zipping around ND today. He kept the county hunter frequencies busy with his runs up through 10m.

### **Sulphur River WMA – KFF-5122 – K-7328**



from the web:

“Established in the 1950’s to increase public recreational opportunities and preserve it’s unique environment, the 18,155-acre Sulphur River WMA contains one of the largest bottomland hardwood habitats remaining along the Red River Valley. Home to an abundant American Alligator population, the area is known for its remoteness and limited access, providing a challenging hunting and recreational experience. A 500-acre moist-soil unit and several fall and winter food plots enhance hunting opportunities, which include waterfowl, deer, turkey, small game and furbearers. Some rolling hills and mixed pine-hardwood stands exist, however, the area is predominately bottomland hardwood and cypress breaks with associated oxbows and sloughs. Sulphur River runs through the WMA for approximately 10 miles and Mercer Bayou, an old river channel, provides over 700 acres of excellent bass, crappie and bream fishing. A tremendous variety of passerine and wetland bird species exist on the area creating abundant bird watching opportunities”

Easy to find and several access points. Had a good run here – reached 44+ Qs – out in a bit over an hour.

Next up in the same county:

**Sandhills State Natural Area (SNA) POTA only K-7353 Miller County**



“Miller County Sandhills Natural Area, located in the Coastal Plain, is one of the few remaining examples of relatively undisturbed sandhill vegetation in southwestern Arkansas. The area is marked by rolling topography and sandy soils. The dry sandy soils support a distinctive flora, which includes a number of species characteristic of similar sites in eastern Texas. Some of the area is open and supports sandhill grasslands, while the remainder supports wooded and open seeps, pine forest, and oak woodlands characterized by a number of "scrub species." This natural area supports more rare plant species than any other area in the System of Natural Areas”

It's just south of the first one run today. Be sure, very sure, you print off the directions and the 'streets' map on the 'zone map' page, or you'll never find it. Just a 'primitive' camp ground access road that goes into it. Only needed 10 Qs for an activation but put several dozen in the log.

Next, I'd head east – but still in Miller County to **Spring Bank WMA K-7354** – POTA only park.

“This 701-acre area is divided into two separate tracts, tract #1 is primarily old fields, bordered by an oxbow lake of the Red River, and tract #2 is forested with a pine/hardwood mixture.

Hunting opportunities: deer, quail, turkey, squirrel waterfowl and rabbits. The old field habitat provides some excellent rabbit hunting opportunities.”

Go to the southern tract – you can't get to the northern tract by car! Close but not in. For the southern part, the road goes right through it. Several side roads into it.

- - - -

Well, I was zipping along and saw a sign for Conway Cemetery. Checked the GPS and it was 2 miles away. Hmmm, I could make a 'quickie' here. I've run it before, so 10Q would be enough for an 'activation' credit for POTA.

### **Conway Cemetery Historic State Park – KFF-1074/K-1074 in Lafayette County**



This is one of the Arkansas 'Historic Sites' which are also 'state parks'.

“When Arkansas was admitted to the Union as the 25th state on June 15, 1836, James Sevier Conway (1796-1855) took office as Arkansas’s first governor. This 11-acre historic site preserves Conway’s final resting place, where a biographical marker details the life of Governor Conway is featured in the park. The cemetery was the family plot located at the former Conway home site, a large cotton plantation named Walnut Hill. There are no campsites or visitor services available at this state historic site.”

- - - -

Started just before 1800z. The NAQP CW contest would start at 1800 and 20m would fill up with testers which is both good and bad. It's a way to rack up a lot of QSOs

fast but it messes up the bands with QRM all the way up to 14.070. From there to 14.100 is filled with digital stuff. You've got to hide out at 14.113 or so if you don't want to be buried.

Did OK on 20M cw for a bit and worked 2 dozen park chasers. Switched over to 15M CW and put 21 testers in the log in 32 minutes. You can work a station on each band for contacts. Most of them have decent beams. NAQP is limited to 100w output unless you only submit a 'check log' or no log at all. The exchange is name and state – speed typically 25wpm and up. This was a 'bonus park' so didn't stick around long. Had lots more to do today.

### **Lafayette WMA – Lafayette County – KFF-5104/K-7300**

“This 14,952 acre WMA located east and north of Bradley, AR, was established as a WMA in 1970 to provide acreage for public hunting. Today the habitat on the WMA is predominantly pine production forest with scattered stands of mixed pine/hardwood forest, particularly along corridors of several creeks that drain the WMA. These extensive forestry management activities result in food for deer, turkeys and other wildlife, and populations have thrived. Accessed from Hwy 29 to the west and Hwy 160 to the south, the WMA is open to the public year-round and attracts hunters, as well as hikers, birders and other wildlife watchers.

Camping is allowed in designated sites along the North CCC Rd.”

Found North CCC road and spots to run it – best access point to run it if you're headed that way.

Worked a bunch of testers on 20M quickly, then hit 30M, 20M up at 14.113 for the park/county chasers. Out of the park in an hour and a half. Needed 44 and put 60 in the log.

All the Qs from the county hunters appreciated, even if you didn't need the county! Helps me get to my 'quota' and on to the next sooner, too!

- - - - -

Last new one for today is **Dr Leslie Sitze III Bois D'Arc WMA KFF-5093/K-7267 in Hempstead AR**

The NAQP was still going on full blast. So....I started working contest stations quickly

on 20M. Could only work them once per band. Worked 44 testers, then caught K8ZZ up in MN. Switched over to alternate frequency on 20M 14.113 or twice the normal freq of 056.5).

Started on 14.113 on 20m, switched to 30m cw, then to 40m cw. 21Qs for park hunters in the log. I was getting worn out for the day – been a long, long day so far. Guess I'm not like I was when 40 years old and could go all day, every day, day after day, zipping around the countryside! Time to head to the motel. Got my 44 plus. Not far from Hope so good chance I'll run this again before long. Checked in the Hope Super 8. They seem to be covid aware. \$57 including tax.

Well, still a bit of time. I could sneak in two more today – quickie repeats of ones I've run time and time again before. The route from Hope to Washington AR is on the Cherokee Trail of Tears. That's a national trail in the POTA system. It actually runs right through Hope – but there's QRN everywhere. You've got to head a few miles north to find a spot to run it. Anywhere within 100 feet of the road works as it's the 'trail' now.

### **Cherokee Trail of Tears – K-3791 – Hempstead County – POTA only**

I put 10 testers on 40M in the log. That was it. Y'all likely have worked me there a dozen times.

### **A few miles up the road is Historic Washington – KFF-1106/K-1106 in Hempstead AR**

Going back 150 years, this was actually the capital of AR at one time. On the trail that led to TX in the way-back days. Now, some preserved and some rebuilt buildings from that time period, with tours of the town. Lunch available at a historic inn going way back. Worked a dozen NAQP testers and left. Time for dinner! 8 miles back to Hope AR and the motel. Filled up gas tank after 310 miles of driving and a bunch of parks with engine running. 12 gallons. Left the radio in the motel.

You could probably run these last two together but I usually run them separately. The trail goes through the town.

Dinner at Dos Locos Gringos back in Hope, AR Just a few people in the restaurant which were spread out. Ate my dinner 'in' this time. Also have take out service if you want to play it even safer. Last time was 'take out' for the ARQP trip. I get their 'Kinda Big Dilla' – which they really stuff with as many things from the list as you want. It's a good ¾ inch thick – mine stuffed with chicken, mushrooms, onions, tomato, and



Monterrey cheese.

## Sunday August 2

Up early at the Super 8 and over to breakfast at 6:15 am. Last time there was no breakfast. This time, cereal and plastic wrapped plates with an apple and a raisin muffin. Made oatmeal with hot water – nuked for another 30 seconds in the microwave. Ate the apple and saved the muffin for mid-morning snack. Coffee. No other person there at that time. Looks like about 15 cars at the motel for guests. Came back to room and washed hands – as I did many times this trip. Also had sanitizer in car as well for rare visit to gas/convenience store – just to grab something for lunch. EZ Marts seem to be covid conscious here. Slice of pizza for lunch usually.

First up today is Hope Upland WMA – K-7267 in Hempstead County – POTA only



A couple miles on a good gravel road at 25-30 mph will get you there. About 10 miles north of Hope, AR. Two roads in – both have good parking areas in the park.

“Acquired by segment in the 1940’s and 1950’s to enhance wildlife habitat and provide public hunting opportunities, the 2115-acre Hope Upland WMA was originally a part of the Southwestern Proving Grounds, a military ammunitions testing site. It consists

mainly of upland mixed pine and hardwood stands. A large food plot system dominates the area along with numerous fire lanes that are planted in wheat annually. The WMA is known for producing large bucks as well as quail, squirrel, dove and rabbits. The area's management plan promotes both game and non-game wildlife species and provides excellent bird watching opportunities.”

Only need 10Q. Early in the day. Only 40m and 30m working. Put 16 in the log including K8ZZ/m up in MN.

Left the park headed north another 5 miles on that gravel road and it takes you to Historic Washington.

-- --

I could do a quick stop at Historic Washington KFF-1106/K-1106 again as the route took me there. A quickie for another 'activation' credit. 18Q in the log on 40M then skedaddled. Seems I run this every time I stop in Hope for the night.

- - - - -

### **Ozan WMA K-7311 POTA only in Hempstead County**

“The U.S. Fish and Wildlife Service deeded Ozan WMA to the Arkansas Game and Fish Commission in 1991. The 580-acre area is within the Blackland Prairie belt in Hempstead County. Levees and watercontrol structures create many moist-soil units on the area, which provide habitat for migrating waterfowl and wading birds. Hills covered in pine/hardwood and cedars blanket sections of the WMA. The area provides excellent public hunting and wildlife viewing for a variety of game and non-game animals. Whitetailed deer, bobwhite quail, eastern wild turkey, and squirrels frequent the upland forested areas, while sections of old-field habitat provide excellent rabbit hunting. During winter, the moist-soil units offer excellent waterfowl habitat. The area also is excellent for watching wildlife, such as wading birds, waterfowl and Neotropical migrants like Bell's Vireo. The area has two public parking lots – one on the west border to access the moist soil unit, and one on the east border to access the WMA interior. “

Put two dozen Qs in the log and headed out.

- - - - -

### **Rick Evans Grandview Prairie WMA/Conservation Area K-7320 POTA only**



“Grandview Prairie represents the largest, contiguous tract of blackland prairie in public ownership in the nation.” “Native Americans inhabited this area long before it was called "Grandview." Documented findings support the existence of the Caddo on the site.

The property was later called the Grandview Plantation and had a reputation for producing valuable crops and livestock.

In more recent times, the area was managed as a cattle farm and private hunting and fishing business. In conjunction with cattle farming, the introduction of non-native vegetation and over-grazing were common. In regards to the hunting and fishing business, the primary focus was on white-tailed deer, trophy bass, and pen-reared native and non-native upland game birds.

Currently, the Arkansas Game and Fish Commission owns Grandview Prairie and is operating a Conservation Education Center and Wildlife Management Area on the grounds.”

“Established in 1997 for the conservation of the endangered blackland prairie habitat found in the area, the Rick Evans Grandview Prairie WMA is a 4,885-acre multi-use area. A landscape level management plan, using prescribed burns and prairie restoration techniques, was developed to restore the blackland prairie ecosystem. In addition to the native grasslands, the area consists of improved pastures, woodlands, wooded draws, and bottomland, providing habitat for the areas high quality white-tailed deer population, small game and furbearers. Excellent fishing is available on the two area

lakes, and hiking, wildflower walks, bird and wildlife viewing opportunities are available throughout the WMA”

There's a nice education center there – and restrooms..... almost a WWFF park but just a bit shy of the required 5,000 minimum acres. Had a good run putting a couple dozen in the log from the same county again – Hempstead – but appreciate the county hunters who work me again. I'll get out of this county soon!

### **Nacatoch Ravines SNA K-7308 POTA only - still in Hempstead**

“Nacatoch Ravines Natural Area protects a continuum of plant communities that occur along the transition from the upland blackland prairies to the low bottomlands along the Little River. It contains one of the largest, and most intact, examples of mesic (moderately moist), dry-mesic, and dry upland forests remaining in the northern part of the Coastal Plain. Through much of the site, canopy trees average 2 to 3 feet or more in diameter, with many larger individual trees. It also includes blackland prairie remnants, hardwood flatwoods, wooded seeps, and supports several rare plant species.”



Nice parking area to stop at....and put a couple dozen (42) in the log. Caught K8ZZ

again in his counties up way north.

### **Millwood State Park KFF-1101/K-1101 in Little River County**

Yay, I finally made it out of Hempstead County. Lots of parks there to run. I've been to this park before – a few years back.



“This is the place for serious bass fishing. A series of boat lanes meanders through submerged timber, marshes, and oxbow cutoffs making Millwood Lake an outstanding fishing destination. This 29,260-acre lake abounds in largemouth bass, catfish, and crappie. Birding is also popular at this Audubon-designated Important Bird Area with sightings of over 300 of the state’s 400 species on record. The park features 45 campsites (27 Class AAA, 2 Class A, 13 Class B, and three primitive tent sites). The camping is relaxed and quiet. Nearby are picnic sites plus a self-guided walking trail and a bicycle trail. A marina offers gift items, groceries, bait, gas for sale, and rental fishing boats, canoes, kayaks, and more.”

Nice state park. Pulled in and the target was 44+ QSOs. Put about 70 in the log. Helps to be in a new county!

## **White Cliffs SNA – K-7172 in Little River County – POTA only – 573 acres**

“White Cliffs Natural Area, located in the Coastal Plain, occurs on a large outcrop of Annona Chalk, rising out of the Little River floodplain (now Millwood Lake) and includes a 100-foot high chalk bluff over the Little River, from which the area derives its name. A continuum of plant communities reflects a range of elevations at the site from the floodplain to the ridgetop. The area includes the largest, and least disturbed, Arkansas occurrences of chalk woodland. This community type is unusual for Arkansas as it is more typical of vegetation found on the Edwards Plateau of Texas. The area is also of historic significance as the site of a late 19th century settlement. The crumbling remains of foundations mark the locations of several structures.”



Put a couple dozen in the log for this POTA only park that requires only 10 to activate. I usually run 20/30/40 till the pile stops calling.

Now it's time to be thinking about a motel for the night. Make a call and reserve a room in De Queen AR. Two parks more possible today. I'm headed north and see signs for Pond Creek NWR. I've been there before – but it's only a few miles off the route. Darn , the car steers itself there.

## **Pond Creek NWR KFF-0169/K-0169 in Sevier County AR**

This has been in the system since the beginning – you can tell by the early number where the first couple thousand were added. It was popular in the ARRL NPOTA



(National Parks on the Air) Event in 2016



“Pond Creek National Wildlife Refuge is located primarily in the floodplain between the Cossatot and Little rivers in southwest Arkansas. A bottomland, wetland ecosystem, it is managed primarily for the benefit of migratory and resident waterfowl, neo-tropical migratory birds, wading birds and other wetland-dependent wildlife. The refuge lies between Ashdown and De Queen north of Little River between U.S. 71 and Hwy. 41. Recreational opportunities include camping, fishing, hunting and wildlife observation and photography. There are six primitive campsites (no facilities) scattered about Pond Creek refuge.

The Pond Creek National Wildlife Refuge is a 27,300 acre wildlife refuge created in 1994. Pond Creek is made up of various oxbow lakes, sloughs, and bottomlands hardwood areas along the Little and Cossatot Rivers and created in order to protect the wetland and bottomland hardwood habitat and to serve as a habitat for neo-tropical migratory birds. It also serves as an important nesting habitat for wood ducks and wintering habitat for other migratory waterfowl. It is located where the Mississippi and Central Flyways intersect.”

Have a good run there with 44+ Qs in the log. That counts for another 'activation' in the WWFF system for year 2020. Once you've run it, though, you don't get credit for another park. Just 2020 stats if anyone really cares. However, many new 'chasers' are around. In most parks, I run 20/30/40M CW. Rarely go to SSB.

- -

I head on out for DeQueen. Along the way is another WMA that's not so easy to find. Suddenly the skies open, and I'm in a 'car wash' type downpour for the next 10 miles. Have to really concentrate on driving in the pounding down heavy, heavy rain! Rotten visibility and no way to hunt for the access possibilities into the Provo WMA. By the time the downpour stops, I'm most of the way to DeQueen. Might as well find the motel and check in, then go to Plan B.

After checking TripAdvisor ratings (no Super 8 or chain motels here in this small town of 6,600 people). I selected "The Courtyard DeQueen Motel" as the best candidate for a decent motel (had 4 star rating) and good reviews, and outside entrances to rooms. No 'common areas' or hallways to traverse. Price was \$50 including tax. Naturally an older place – probably 60 or 70 years old, but well maintained. It's right downtown and easy to find. Check in – and room is good. Separate air conditioner unit so no common air circulating. Good bed – small bath but it will work fine. Medium size TV with 30 channels.

It's only mid afternoon so I could head on up the road to the **DeQueen WMA – KFF-5092/K-7283 in Sevier County** about 10 miles away.

DeQueen Lake is a small reservoir – surrounded on many sides by Corp of Engineer property. The WMA is 8000+ acres.

Pulled in late in afternoon – stormy conditions around – lots of static on the radio – all bands with big crashes. Put out the park and county on 20 and 30M. Get to 50Qs and about that time, the skies open up and it's another 'car wash' type rain where you can barely see the front of the car. A few lightning bolts zip down around me. Disconnect antenna from radio! Time to go QRT! Didn't make it to 40M but likely band nearly useless due to static. Wait until rain stops 15 minutes later and decide I've had enough for the day. Back to the motel. Unload the car. Run to nearby gas station and fill up. Only 183 miles driven today but lots of park stops!

It's dinner time. Across the street is Mary P.O.P.S. Mexican restaurant with a few cars in the lot and several more at the take out line. Decide to risk it and head inside. Maybe 8 or 10 folks there and tables well separated. Enjoy dinner then head back across street to motel.

Check weather and yep ,there is line of big t-storms all tracking across my QTH. Hunker down for the night.



## Monday August 3

There's a breakfast place across the street. - Three Girls Cafe. Decide to chance it and head on over at 6:15am. Three other people in the place – looks like the early breakfast club table as they are seated at big table. Two sitting outside drinking coffee. I'm the only other customer and 30 feet away from the others. Good! Have a nice breakfast. By the time I'm done, a few more 'seniors' have joined the breakfast group.

Head back to room, load up the car, put the radio back in, and head out to the next park to the north about 20 miles.

## Howard County WMA – in Howard County AR – KFF-5102/K-7296



For some reason, the name on the sign is missing, but that's the sign.

“Typical Athens Piedmont Plateau habitat includes rolling hills intensively managed for pine production and pine/hardwood mixed stands along creeks. The area is bordered on the west by Gillham Lake and the Cossatot River and partially on the south by Dierks Lake.

This area is made up of approximately 23,000 acres of Weyerhaeuser Company land. The primary objective of this management area is to provide quality wildlife habitat and public hunting opportunities. Typical Athens Piedmont Plateau habitat includes rolling hills intensively managed for pine production and pine/hardwood mixed stands along

creeks.

Wildlife management practices are integrated with timber management practices to provide quality wildlife habitat and hunting opportunities: deer, quail, turkey, squirrel, and rabbits. This area is known for producing large bucks.”

- -

Since it's a new county, and new park for everyone, the run goes well. Start on 40m cw. Then try some 40M SSB with a dozen. Switch to 30M with 16 more, then a dozen on 20M. Still fairly early. Success in reaching 44+ Qs. Very few DX stations worked. While the SFI is over 70 – mostly around 72, the A is running 8-10 and the K is 2 for much of the trip. Only OH1XT makes it in the log more than a time or two.

After the park, make a quick stop to put out just Pike County AR on the way back to DeQueen. I'll be heading south now for a couple hours. Back to Sevier and Little River Counties for more parks.

### **Provo WMA - KFF-5115/K-7317 in Sevier County AR**

This is not far south of De Queen. Missed it on the way up with the car wash type rains so I'd get it heading back south. Not so easy to find. Hint: “Approach from south off Provo Road.” Took me 15 minutes to discover other road didn't quite get there. Ended on private property and the WMA boundary was 500 feet away according the land owner.

This area is located on a ridge between the Cossatot and Saline Rivers and primarily consists of intensively managed pine timberlands and mixed pine/hardwood tracts. 11,000 acres. Wildlife management practices are integrated with timber management practices to provide quality wildlife habitat and hunting opportunities. These management practices provide substantial open land habitats and stimulate excellent browse production.

The maps off the web page are good for planning but don't print off well – be sure to select 'streets' rather than topo. I make my own diagram of how to get in to the WMAs. Some are well marked off main highways. Some are not marked at all or have signs for Weyerhouse Property with a dirt logging road in. If you want to camp or hunt, you need a special “leased land” permit for the various WMAs. They are \$40 each and only good for one specific WMA that is leased land – about half a dozen of them state wide – mostly in western part.

## **Gum Flats WMA – KFF-5098 K-7290 Little River County**

If you missed me in Little River, I'm back!

“This area is in the Little River and Red River drainage systems and primarily consists of intensively managed pine timberlands and mixed pine/hardwood tracts. This area consists of approximately 15,000 acres of Weyerhaeuser Company land.



“This 15,661 acre WMA located between Ashdown and Foreman, AR, was established as a WMA in 1999 to provide acreage for public hunting. Today the habitat on the WMA is predominantly pine production forest with scattered stands of mixed pine/hardwood forest, particularly along corridors of several creeks that drain the WMA. These extensive forestry management activities result in food for deer, turkeys and other wildlife, and populations have thrived. “

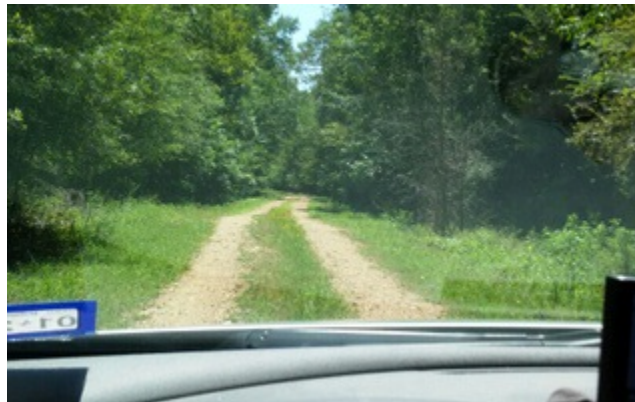
If you want to camp here, it's a \$40 permit for this WMA. I work at it and get about 50Q in the log. KODEQ wants 17M. Try 17m and make a dozen Qs there. KODEQ asks for 15M. Try 15M and 10 go in the log! Finish off with 30M and just a few on 40M. Time to head on home soon. One more to go!

## **Palmetto Creek - K-7317 POTA only park in Little River County**

Palmetto Flats Natural Area is the largest contiguous block of alluvial terrace forest remaining in the Red River Valley in Arkansas. It contains large, high-quality examples of rare wet hardwood and pine-hardwood flatwoods with a dwarf palmetto understory as well as seeps, upland mound woodlands, forested sloughs, and marshes.



Good directions on the web, but I drove by the sign and spent 15 minutes hunting for the road in. You'll find the sign easily coming north but not so visible going south. To get to the SNA, you've got to head on down this road. Once you start, you are committed!



It's a one lane road. It gets much narrower in 300 feet. There's a ditch 2 feet on either side of the tracks so no way to pass another vehicle unless maybe it's a 4-Wheel drive Jeep or pickup truck that doesn't mind going 'offroad'. You've got to go 0.3 mile to get to the WMA boundary and the road gets even narrower! The first place you can turn around is a mile down this 20 mph type bouncy rough gravel road and the parking lot is 1.3 miles down the road. Fortunately for me, no other cars around! The web says in bad weather, the road can be flooded.

Had a good run of a couple dozen from here. Temps in low 90s.

It was now after noon. Decided that it was time to head on home with no more radio activity. Drove 18 miles to the south, hit I-30 West at New Boston TX in Bowie County and zipped on home at 75-79 mph keeping eyes on road and traffic. No radio. There was about one 18 wheeler for each 4 cars on I-30. No time to be running counties along

the way and have put out those green stampers a lot of times. Nearly 3 hours until I hit a traffic light 4 miles from the house. No traffic mess ups. Good.

Home by dinner time. 790 miles in 3 days. Temps hit 99F as I was driving along. 95F in driveway at 5pm.

Trip added about 15 new parks and 20 'activations'.

Thanks for riding along.

## Maryland/DC QSO Party

Looks like a decent amount of activity – most of it on 40 and 80m back east. Caught a few here while out mobile on 20M. N8OYY was mobile putting out counties on the eastern shore. More contacts made on SSB than CW – as is the usual case. The contest was held during the big WAE contest which messed up the 20M CW band big time. Lots of big gun stations back east calling CQ WAE, but fairly weak EU signals down here in TX. Highest number of counties worked reported was 20 or so with most in the low 10s or single digits. Many scores reported were only a handful of contacts to qualify for the State QSO Party Challenge where you need to 'participate' in as many of the state QSO parties as you can.

Rules were very complicated with half dozen 'categories' from 'standard' to club to unlimited to QRP and most out of state stations were clueless as to what category they were in.

From the 3830 reflector:

**K3MTR - Club - 167 cw 561 SSB**

INTERESTING CONTEST, HARDLY NO MARYLAND STATIONS --- PROBABLY BECAUSE PEOPLE COULDN'T GET THROUGH THE RULES LOL. BAND CONDX WERE IN AND OUT, PRETTY MUCH THE ENTIRE TIME. DISAPPOINTED NO 10 OR 15 ACTIVITY. FOUND THAT N1MM WOULD NOT ACCEPT DATA FROM WSJTX IN DIGITAL; HAD TO EDIT IN MANUALLY AT

END OF CONTEST. ALL STATION EQUIPMENT AND OPERATORS PERFORMED ADMIRABLY, DESPITE BAND CONDX. HAD A FEW DX STATIONS CALL IN CURIOUS TO KNOW WHAT WE WERE DOING. MANY US STATIONS RESPONDED TO OUR CQ AND HAD NO IDEA WHAT TO GIVE US --- THEY WERE IN GOOD COMPANY. GREAT COMRADERY AMONG ALL OPERATORS AND DELICIOUS FOOD TO KEEP EVERYONE GOING.

73 FROM THE CONTEST CREW, K3MTR WA3EKL KB3VQC WT3K K6ZO N3DPB

**NW3DC - Washington DC 72 cw 37 SSB**

Now that was different! Entering the many categories into the log made life that much more interesting.

The activity wasn't band, although I only worked 9 MD counties (+ K2ACX in DC... thanks, Brian!). If I were a decent CW operator, I'm sure I'd have done better. Time to practice, practice, practice.

Nothing blew up -- a good sign!

73, Eric NW3DC (@W3DQ)

**WN4AFP - fixed SC 19 cw 37 SSB 15 counties**

It's great to have a QSO Party on the air. This was a 40/80 contest for me... 40, was good up until late afternoon when it went too long for MD before 80m opened up to MD. So that was a good time to take a long break and come back when 80m was alive. Overall, this was a phone contest. I tuned CW many times only to find no one home. Thanks to NB3A for running mobile. I struggled with reading the rules for this contest. Thanks to all for the contacts. 73s Dave WN4AFP

**K4VBM - 16 cw 25 SSB 14 mults**

Didn't really participate as a club this time as I was passing out STD for my class - in hind sight I should have passed out CLB and gave people more points LOL.

Band conditions during daylight were horrible - at night signals got stronger, but still high levels of noise and static crashes. Phone was the money mode with 25

QSOs, CW also contributed nicely with 16 QSOs, and digital accounted for 3 (FT8) QSOs.

Nothing on 20m this year - 40m and 80m were where they were. The scoring per the online summary web page didn't agree with the published rules, so only they know what my score really is.

My guess is that the N1MM score above is low. Still, my best score ever in this contest, and last year I skipped it. Did get the bonus station on 2 modes, and 14 multipliers. Had great fun as always! And my best score ever for this contest!

### **NB3A mobile - 133 SSB QSO**

Condx really bad until 1800z plus. We had to fight for all the QSOs we managed. Thanks chasers! 435mi/700km driven, using ~40gallons of petrol

Traversed 10 counties, operated in 9, missed Carroll - too short.

Will be back for next year, hopefully conditions are better.

### **AD5XI - rover in MD 38 cw 12 SSB**

### **K1RO - fixed NH 17 cw 60 SSB - 22 counties worked**

Thanks to the mobiles/rovers for going on the road. Too bad conditions were not better.

### **WB8WKQ - Fixed MI 28 CW 47 SSB 20 counties**

Very unusual changes in the rules this year. Not sure I particularly like them. The "rush" or joy of working CLUB stations for 10 points, QRP stations for 4 points, MOBILE stations for 5 points, is all thrown out the window. Now it's just CW = 3 points, and phone = 1 point, no matter what category the MDC station is. This sure messed up my software, and took a little joy out of the contest, in my opinion. With that said, my 75 Q's and 20 mults were much better than 2019's of 54Qs and 14 mults. I was only able to "muster" up 3 Q's on 20M. The Euro contest kept 20 CW hopping and probably took away from the MDCQP. 40 during the day and 80 in the evening were

pretty good here in Michigan. Normally, I would have entered STD, in order to get the overall power multiplier. But, since I'm working on the QP Challenge, I wanted to maximize all Q's and decided to run AMP. I only heard one mobile, that being NB3A and got him 5 times. Thanks for your mobile activities! Thanks to all the MDC stations too!

### **K8TE - fixed NM - 4 cw 10 SSB 6 counties**

The name Slim Pickens comes to mind. Too bad more MD-DC ops don't make this interesting. At least the Ham Expo was running so I had an incentive to stay in the shack by the computer. Thanks to those who provided the contacts! I couldn't copy the one mobile I saw spotted. The stations I did work were generally loud out west. At least this qualifies for the State QSO Party Challenge.

73, Bill, K8TE

## **Hawaii State QSO Party**

Propagation was not great to HI this year on 20 and above. The west coast stations racked up a 20-30 contacts but it was slim pickings further east. Even though FT-8 was allowed, there were very few reported contacts on that mode – which is surprising with the band conditions.

### **KH6LC - 181 cw**

With the Covid mess we knew there would be fewer Hawaii stations on...What we did was get on with several callsigns, for a few hours with each one...It was fun for Roby and I and gave you folks a few more calls to put in your logs...Hopefully next year we'll all be back to our regularly scheduled program...Mahalo for your contacts.

Stay Safe

Vy 73 and Aloha

Lloyd KH6LC, Rob NH6V

Three other calls used this super station for a couple hours each...NH7A, NH6V, WH7V, KH7W – each with 150-375 or so QSOs.....



**KI6RRN - fixed - CA 39 cw 34 SSB 21 multipliers - no comments**

**NS2N - fixed - NY 16 cw 10 SSB 3 dig 11 mults**

FT-8 QSO procedure didn't work for me: only saw one KH6 using the FD protocol and N1MM complained when trying to enter FD QSO info.

Most KH6 stations I ever worked in a contest. Thanks.

**WN4AFP - fixed SC - 9 cw 5 mults**

Nice prop to HI on 40m on Friday night. Very difficult to work HI the rest of the weekend. Thanks for the Qs. Dave WN4AFP

## On the Road with N4CD II

The summer was slowly passing along....days were getting noticeably shorter. Up north, K8ZZ and W0GXQ teamed up to put out lots of MN counties day after day. On occasion, the sunspot number notched up from zero for a few days here and there. I remember seeing sunspot number of 23 one day. Then back to zero and a few days later another group of sunspots for a day or two. Band conditions went from 'good' to not so good with no rhyme or reason and back to not so good most of the time. 40M and 30M CW filled in a lot of the time.

The first trip to AR went OK, so I was set to try a second somewhat longer trip to the upper half of AR and across, hitting more than a dozen new parks. Back at the beginning of the year, I was hoping to hit over 100 new parks this year, raising my total number of parks to over 1,000 different ones run. Well, things have a way of messing up plans, but that's still a long term goal. The long 3 week trips here and there are history - probably until next spring/summer when the vaccines are readily available and deployed. Meanwhile, I'll limit my travel to just a few days each with a couple motel stops.

Nasty weather delayed my start a bit as thunder and lightning rolled through here on Sunday, August 18. Lots of wind (>50 mph) that took down some trees around here, but not much else, fortunately. I'm getting tired of close to 100 degree days, day after day. Even the swimming pool is up to 89 degrees F. Too warm, but at least 'wet' for the every other day aerobic exercises in the pool. (All the gyms are still closed and the few open are not COVID safe by any means. ) It would be a little bit cooler in AR.

## **Monday, August 18 – Day 1**

I headed north up US 75 through Grayson County to the OK border, through Bryan to Atoka. Here you'll find the **Atoka WMA – KFF-4794/K-6339** – just a ½ mile off the main highway about 10 miles north of the town of Atoka. Pulled in to make a quick run for Atoka County. Two dozen quickly go in log, then I scoot. Ed, K8ZZ is running up in Chisago, MN.

Up in the next county, you'll find **Lake Arrowhead State Park – KFF-2770/K-2770 in Pittsburg County**. I make two dozen QSOs then scoot again. Both were repeats.

A bit later, I worked W0GXQ in Sioux, IA on 40 and 20M. On 17m, catch him in Obrien, IA. K8ZZ is now in Anoka MN. Not long after Jerry, GXQ is in Oseola IA. Conditions very good for a few hours today.

It's a long ride up on Highway 69 up to I-40 headed east into OK....a few hours later, just after I hit the border, I'm headed north on AR highway 59. You enter the **Ozark Natural Forest – KFF-4425/K-4425**. I make a quick dozen contacts on a forest side road just off the main road on a logging road. It's also good for the Cherokee Trail of Tears, K-3791 as this was one of the main routes from GA to OK. Mostly get park chasers here. I'll be in the county for the next park.

Along this route are signs for the Butterfield (Stage Coach) Road. You'll recall (probably dimly from previous issues) that back in the Pony Express days, a competing system was being set up just before the Civil War started. The stage route would run from MO to California, and had a contract with the government to haul the mail about to go into effect. The stage coach could carry a lot more mail than the saddle bags on a Pony Express rider – but a bit slower. All across AR on route 64 you'll see the same signs. There were no interstates in those days. Unfortunately for Mr Butterfield, the Civil War started – and half his route was in Confederate Territory (TX and AR joined the Confederacy). However, there is no park entity for the Butterfield Coach Road in the park system – just a touristy thing. There are a few sites around the country (not many preserved) you might encounter on your travels. Some are historic inns where the

coach stopped for the night.

First new park today is **Lee Creek WMA** about 20 miles north of I-40. It's a POTA only park K-7345. I pull in around noon time and have a decent run of a couple dozen. Two DX stations in the log. Lots of places to run this. Both K8ZZ and W0GXQ are now in MN.

Next up is a bit harder to get to! It's **Garrett Hollow SNA K-7176** in Washington County, AR. (670 acres). First you have to find Liberty Hill Road off highway 59. It's a few miles further north of Natural Dam – further north than you expect! Then you start on that road for lots of miles. The first 3 miles are paved. You are climbing – up and up – then the road turns to gravel and you've got another five miles plus of 20 mph gravel road. After that, you find Antioch Road which forks off and you have another couple miles of even worse gravel road till you reach the park unit. Wasted a bit of time trying to find the first road, then bumping along at 20-25 mph the rest of the way. Had a couple dozen in the log. Then you've got to head back on out. Road a bit easier because it's all downhill! You didn't realize it coming in.....goes a bit faster, but still a 25 mph road for miles and miles. Some are easy to run. Others, not so. This one takes a good two hours to put out – most of it just getting there!

“Garrett Hollow is marked by rugged topography and consists of diverse hardwood forests and sandstone glades. Like much of the Ozarks, this natural area contains a number of karst features, where fractured bedrock allows water to drain into crevices and solution tubes, creating small caves and subterranean streams. Caves and crevices within the natural area provide critical habitat for the federally endangered Ozark big-eared bat.”

Head on back south. Make a quick run for the Cherokee Trail of Tears going south again then head to the motel for the night. Rested tonight at the La Quinta in Alma, AR which is a bit east on I-40 into the state. This one has a dozen rooms with outside entrance doors. Good – no need to walk through corridors.

There's a nearby Cracker Barrel restaurant – didn't appear too crowded at 5pm so I head on in. Maybe 25 people in the large place that holds hundreds. Have a good ole country ham dinner with 3 sides. More crowded than I like but 15-20 feet between occupied tables.

Did 334 miles the first day – and took 13 gals of gas with the multiple park stops.

**Tuesday – Day 2 – August 19, 2020**

Breakfast consisted of a plastic plate with shrink wrap apple and mini-muffin. Made coffee in room. No hot breakfasts these days at hotels.

I'm on the road by 7am headed east to the next couple of parks. These should be easier to find, but you never know!

First up today is **Frog Bayou – a POTA only park – K-7340 in Crawford County AR.** Easy to find if you examine the map for the site, and write down (or make your own sketch of how to get there).



From the state site:

“Frog Bayou WMA was established in 2005 by the AGFC in partnership with Ducks Unlimited and the U.S. Natural Resources Conservation Service. The area nearly tripled in size to its current 2,180 acres in 2017, thanks to a partnership with The Trust for Public Land and Federal Aid in Wildlife Restoration Dollars.

The WMA is along Frog Bayou (also called Clear Creek), south of Dyer in Crawford County near the Arkansas River. U.S. Army Corps of Engineers land adjoins the WMA. The former farm is a wetland restoration, with migratory waterfowl its main user.

Seven moist soil units with low levees are operated as shallow impoundments during late fall and winter; one of these units is separated from the main tract. Much of the other land has been planted in hardwoods such as cypress and willow oak. About 40 acres are forested. Rabbits are plentiful, with some squirrels and deer. A variety of shorebirds - herons, egrets and less common species - white-faced ibis visit the area. “

Pulled in at 7:30am and had a good run. For POTA only need 10 QSOs but put many dozen in log. This was an ATNO for all. There for about an hour.

Next up is **Ozark Lake WMA – same county – KFF-5111 and K-7349**. For this one, in both systems, I'd aim for at least 44 QSOs to get credit to meet the 'quorum' level for activation. You can head just a few miles south of the first park here and head to the boat ramp which is in this WMA. It's 7800 acres in size and consists of the public land around the lake. Ozark Lake itself is 10,000 acres and has a 173 mile shoreline.

Have a good run with over 50Qs from here. Success in getting to the 'quorum' (ie, 44 contacts for WWFF credit).

- -

I'm headed east now to **Ozark Natural Forest WMA - POTA Park K-7312 in Franklin County AR**. This WMA is 690,000 acres and spread across ten AR counties. I just find a piece on the way to the next. It's also a two-fer with KFF/K4425 the AR NF. The Ozark-St Francis National Forest is over 1.2 million acres.

The road north of I-40 (route 23 – 'the Pig Trail Scenic Byway') is a good twisty road that goes up and over ridges. Average speed probably 35 mph. Takes a while to get anywhere. It's known for its steep hills and hairpin turns.



Have a good run and finish with 45Qs.

- - - -

Next up is **White Rock WMA** a bit further north on Route 23. **KFF-5126 and K-7333**

## **in Franklin County, AR.**

From Wiki: “The White Rock Wildlife Management Area (WMA) was designated in 1976 as 280,000 acres of protected area within the boundaries of the Ozark National Forest. The WMA is owned by the U. S. Forest Service and managed under the provisions of a Memorandum of Understanding by the Arkansas Game and Fish Commission, and is situated in the Boston Mountains of Northwest Arkansas.

The Mulberry River runs through the southern part of the WMA and there are four major lakes; Shores Lake, Horsehead Lake, Lake Ft Smith and Lake Shepherd Springs. Fishing, hunting, trapping, and recreational activities such as canoeing, hiking, and observing fauna and viewing flora . Wildlife includes squirrels, deer, wild turkeys, black bears and fur-bearers. There are camping, picnic and swimming areas throughout the WMA.”

More than 44Q go in the log so I was a happy camper.

- - -

Back to I-40 over the hills and hairpin turns. Back to the Interstate I-40 and head west toward Ft Smith. Go a bit south to **Fort Chaffee WMA KFF-5095/K-7286 in Sebastian County AR.** This is a 66,000 acre WMA that spans three counties. It's all part of the Ft Chaffee Training Center. If you want to go hunting or fishing here, you've got to take their mandatory 'safety course'. Otherwise, there are many spots within the WMA you can run it at without access to hunting tracts. It's huge.

Have a good run. It's getting late afternoon, but the motel isn't far away. I can get in one more today – a repeat at Ft Smith Historic site. These days I don't have the energy to go, go , go all day till evening hours – hi hi. I usually stop by 5pm.

**Fort Smith National Historic Site – KFF/K-0822 in Sebastian County AR** was very popular in the ARRL NPOTA days (2016) as one of the 900 available sites. Thousands participated in that year long event. It had been a long time since I was here so time for a repeat visit.



I pulled in at 1941Z and put 50+Qs in the log. Guess many POTA folks weren't around in 2016 so that's good.

Here's some history from the National Park Service:

“At the turn of the 19th century, as the developing nation expanded into present day Georgia and Tennessee, a group of Cherokee Indians moved into Arkansas, where the Osage Indians lived. The United States government promised the Cherokee and other eastern Indian tribes new homes in exchange for their peoples’ lands, but the movement of eastern tribes into Osage lands angered the local Indians. Eventually, after disputes over hunting grounds led to the deaths of several Osage and Cherokee Indians, the United States established a military post near the Osage border to end the hostilities between the tribes. Fort Smith National Historic Site commemorates the history of the fort’s role in establishing law and order during America’s westward expansion and it stands as a reminder of the removal of the Cherokee and other eastern tribes, whose journey is also commemorated on the Trail of Tears National Historic Trail.

Founded in 1817, the first Fort Smith had a strategic location at the point where the Arkansas and Poteau rivers meet. Known as Belle Point, this rocky bluff allowed the soldiers stationed at Fort Smith to have a commanding view of the countryside and river traffic. Built by Major William Bradford and designed by Maj. Stephen H. Long, who as the army’s Topographical Engineer also chose the fort’s location, Fort Smith was a small log and stone stockade enclosed by a 132 square foot sandstone wall. Guarding its northern and southern corners were two square blockhouses, each 28 feet long and two stories high. Within its walls were a hospital, storehouse, provision house, cabin for the commanding officer, and a few barracks to accommodate the 130 men stationed at Fort Smith.

After fighting between the tribes subsided, Arkansas Governor James Miller and the fort’s commanding officer Colonel Matthew Arbuckle immediately began to negotiate a

treaty with the Cherokee and Osage to restore peace in the region. The 1822 Treaty of Fort Smith reconciled most of the difficulties between the tribes and guaranteed them that white emigrants would not settle on their lands. With the Cherokee and Osage crisis under control, the army abandoned Fort Smith in 1824, and moved its garrison 80 miles north to Fort Gibson, where the increase of eastern tribes in other Indian hunting grounds had created tensions on the western frontier. Although transient troops and Choctaw Indians used the first Fort Smith intermittently as a supply depot after its abandonment, the army never maintained the site, and all that remains today are the fort's foundations that archeologists unearthed in 1963.

As eastern tribes and settlers continued to move west in increasing numbers, the American government ordered the army to reoccupy and expand Fort Smith to protect the citizens of Arkansas, which became a State in 1836. After the Indian frontier moved beyond the Arkansas State boundary, the army moved out of Fort Smith, and in 1872, the Federal Court for the Western District of Arkansas moved in.”

- -

There's a nice visitor center and half a dozen second generation buildings there. The Cherokee Trail of Tears passes through this site, but probably at the river edge, not further inland. If you set up portable, you can make it a two-fer. Otherwise, it's not certain where the Indians set up or if they stopped here along the river. They didn't move at night but set up camp each night along the months long trek from GA/NC to OK.

Had a good run of 44+ QSOs. Back in the NPOTA days, you could put 200 QSOs in the log in 2 hours! In December 2016, I made 287 QSOs on a visit here! Those were the days!

Of course, conditions were a whole lot better. This year, 20M was spotty. Some days decent, most days just so so. Sunspot number from 0-20, mostly zero and SFI around 70 for most of this trip. 20M SSB tough most of the time. 20M CW just OK.

- - -

Headed out to the nearby La Quinta Motel for the night. Had to go 20 feet through the lobby to my room but no sweat. Not crowded. Right next door was a Chili's Restaurant. Not many there at 5pm so decided to 'eat in'. Maybe 5 tables occupied out of 30 and no one within 15 feet. Had their quesadilla dinner and out in 30 minutes. They also seem to do a big take out business with 10 spots reserved for pickup in the parking lot.



**Wednesday August 19, 2020**

Breakfast consisted of a individual paper bags with a bottle of water, a muffin and an apple. Made coffee in the room.

Today I'd head east again – this time south of the big river. You can only get across it at just a few points from north to south for the next 150 miles. I'd be trekking along Route 64 – the 'military highway' for much of it, the Butterfield State Coach Route, and Cherokee Trail of Tears route as well.

Some interesting history on the Butterfield Stage Coach route:

“Butterfield’s Overland Mail Company carried the first successful overland transcontinental mail by stagecoach through Arkansas as it went from the Mississippi River to California. Though only running from 1858 through 1861, it was the longest stagecoach line in world history at approximately 2,812 miles and was a major factor in the settlement and development of Arkansas and the American West before the Civil War. Its two main routes ran through Arkansas, westward from Memphis and south from Missouri, connecting in Fort Smith (Sebastian County). Many sites in Arkansas, such as Butterfield Trails Village in Fayetteville (Washington County), still reflect the era of Butterfield’s Overland Mail Company.

Before modern technology, the mail was America’s lifeblood. “Post roads” were created in the original colonies even before military routes so that the mail could be carried. As the new country expanded west of the Mississippi, Congress recognized the need for an overland mail service to the Pacific. When gold was discovered in California in 1849, bringing over a quarter of a million people to the West Coast, there was a huge demand for transporting mail and passengers. At the time, the usual route was by boat, either around South America or with an overland crossing in Panama, both of which were time-consuming, expensive, and dangerous. After California threatened to secede if a faster mail service was not established, Congress voted in 1857 to subsidize a mail run from the Mississippi River to San Francisco. It required that mail be safely carried in twenty-five days or less. The six-year, \$600,000 contract was awarded to John Butterfield, who had an extensive transportation empire based in upstate New York.

Butterfield’s contract demanded that service begin within a year. He then had to lay out the route to be followed, needing hard surfaces, gentle grades, and passes that would not be snow-bound in winter. He began the run just west of St. Louis, Missouri, in the town

of Tipton, following a southwesterly route through Arkansas, Texas, and Arizona on the journey to California. A connecting route ran from Memphis to Fort Smith, where it joined the Tipton route.

The stage stations had to be stocked with horses, mules, harnesses, food, supplies, wagons, and other equipment. Some 1,500 employees were hired as station masters, superintendents, line riders to keep the trail in shape, vaqueros (Mexican cowboys) to take care of the stock, stage conductors, and stage drivers. About 1,000 livestock were needed, and thirty-six Concord stagecoaches were used on the settled sections of the trail, while sixty-six Concord stage (celerity) wagons were used on the 1,920-mile frontier section between Fort Smith and Los Angeles, California. There were fourteen stages in operation at any given time, and the rest of the stages were stored at regular intervals at the stations.

The first Butterfield stage entered Fort Smith on Sunday, September 19, 1858, at 2:00 a.m. The mail got hauled east/west.

Because of the impending Civil War, the line was ordered by Congress on March 2, 1861, to transfer all equipment, livestock, and personnel to the Union-held Central Overland Trail, where the six-year contract was completed September 1864. The Confederate army had confiscated Butterfield's stages in Texas to convert them to military vehicles, but eighteen of his stage wagons managed to make it to the Central Overland Trail."

AR and TX had joined the Confederacy so that was the end of Butterfield.

Things never resumed for his company after the Civil War.

—

And then.....the transcontinental railway was completed in 1869.....and that was the end of most of the long haul stage coach routes. No need to take 25 days when you could do it in 5 on the train – and the train could haul 10 times as much mail.

- - - - -

First up today – **Cherokee Prairie SNA – K-7173 in Franklin County AR.**

“Cherokee Prairie Natural Area is one of the largest remaining tracts of tallgrass prairie in the Arkansas Valley. Located just north of Charleston, this tract is a high-quality

prairie representative of the more extensive Cherokee Prairies that once occurred across the western portion of the Arkansas Valley. The natural area contains a diverse array of forb species (herbaceous species other than grasses) including compass plant, purple prairie clover, and Indian paintbrush. It also supports a number of plant and animal species that are now considered rare, or even endangered. Prairie Creek flows through the center of the natural area.”

584 acres in size. Have a good run. Only need 10 but 50Q go in the log.



Next up not far away is **H. E. Flannigan K-7178 POTA only in Franklin County, AR.** It's only 257 acres in size.



“H.E. Flannigan Prairie Natural Area is an excellent example of the tallgrass prairie that once occurred across this part of the Arkansas Valley. Along with prairie grasses, the natural area hosts a wide variety of forbs. H.E. Flannigan Prairie, along with the nearby Cherokee Prairie Natural Area, is among the few remaining remnants of the more

extensive Cherokee Prairie Complex that formerly occupied approximately 135,000 acres of the western portion of the Arkansas Valley. Prairies in this complex are different from prairies elsewhere in Arkansas as their soils are derived from shale. An oak savanna/woodland complex at the eastern edge of the area is currently being restored.”

Have a good run – 50+Qs in the log. Catch a few stations in the Wednesday CWT at the tail end, then hit the regular frequencies. Also showed up on SSB for this one!

-----

If you are going to do all the WMAs/SNAs in AR, some of your routes will be on gravel roads! Guaranteed! Most good but slow as you bounce along. Go too fast, and you risk flat tires and a beat up bottom of the car and side panels.

-----

Now I've got a ways to go to get to the next one. **Mount Magazine WMA KFF-5108 /K-7306 in Logan County AR** is 120,000 acres in size. It's also a two-fer with the Ozark National Forest at most spots.



It's a new county, so lots of contacts go in the log Finish with 44+ so again I'm a happy camper.

---

You head on UP the mountain to the next – **Mt Magazine State Park KFF-1104/K-1104 in Logan County AR.** Now the challenge – to work another 44Q in the same county. Hopefully the park hunters will jump in and give me enough Qs along with friendly county hunters who will work me just for the park now. Much of the work here was done by the WPA back in the 1930s – the first lodge, for example and other works.



Jerry, W0GXQ/n is busy up in WI. Work 3 stations on 17M cw but that's it. Then 20 , 30cw, 20m SSB for one, and just a few on 40M. Make it to 44! Whew. Not many more though. This site has been run and run – probably by campers who spend a couple days here. 44 previous activations! There's also a just renovated lodge (66 rooms) , cabins and small campground at the top of the mountain – the highest point in Arkansas at 2700 feet. Luckily, I've had decent internet connections to self spot just about everywhere so far. Here, it comes and goes but works well enough for self-spotting.

There are currently 203 POTA parks in AR! So many parks....so little time. I've been to about half of them now. Maybe more. Still 50 at least to go.

- - -

If you continue south down off the mountain on the only road, you reach **Blue Mountain Lake Outlet National Recreation Area KFF-4373 K-4373 in Yell, County AR.** New county! No getting lost here. There is one road to/from the state park.



This is a COE property at Blue Mountain Lake by the dam. Pull in and put out the park. Got to reach 44 and I just make in it with a few to spare. Gerry, W0GXQ is up in Olmstead, MN. I'm missing a lot of his counties as I'm off the net frequencies and busy a lot of the time. This mostly consists of a campground, picnic area and general use area at the dam outlet.

- - -

Not far away, but back in Logan County, I run **Blue Mountain Lake WMA, KFF-5085/K-7266**. It's 8200 acres in size and is the COE property around Blue Mountain.

Need to get to 44+Qs. Will I get there? Ah, it's Wednesday weekly CWT time and I can work the CWT stations – search and pounce – for contacts. (CWT – Wednesdays at 1300z and 1900z). Put 44 of them in log, then go run my POTA frequencies (usually around 14041-14046.5, 10121, 7041-7046.5) for another 40Qs. Ed, K8ZZ is on the county line of Fillmore and Houston MN.

It's getting late. Have to skip a POTA only one 20-25 miles away to the west. That would take 2 hours plus.....and I have an hour and 15 minutes traveling east to get to the motel for the night. One got away.

I head east 40 miles to the Russellville, AR area for the night.

-----

There's just enough time to squeeze in a run at **Lake Dardanelle State Park KFF/K-1091**. It's a few miles off my route but close enough. Car takes a turn that way all by itself. Pope County – a new one.



“This park is located in two areas on Lake Dardanelle, a 34,300-acre reservoir on the Arkansas River. The main site is in Russellville where you’ll find the Sport Fishing Weigh-in Pavilion, a fishing pier, boardwalk, trail, and visitor center with five aquariums and the Lakeview Room meeting facility. It’s also a National Park Service-certified site on the Trail of Tears water route. Park interpreters lead a variety of programs and lake tours. There are 57 campsites in the Russellville area of the park (16 Class AAA, 14 Class AA, and 27 Class B) with 18 Class B sites in the Dardanelle area of the park. “

---

If you park within 100 feet of the water, I guess you can run the two-fer with Cherokee Trail of Tears K-3791.

I head out with 46Qs...whew! Squeak by – late afternoon. Time to head to the La Quinta in Russellville 7 miles away.

Dinner at the Cracker Barrel within walking distance early (5pm). Not crowded then. Maybe 20 people at 10 tables out of 100 inside the place. Well spaced out. Good. Have their maple bacon grilled chicken breast. Very good! (too bad my local Cracker Barrel at home is mobbed and 35 minute drive away. Avoid avoid avoid in COVID world!) I can't wait for vaccines and getting back to the 'new normal'. This COVID stuff is going to be with us forever from now on....so it won't be like 2019.



-----

**Thursday August 20, 2020**

Same breakfast. Muffin/apple on individual serving shrink wrapped plates.

Right around Lake Dardenelle is a lot of COE property which is the **Dardenelle WMA KFF-5090/K-7280 – Pope County AR.** It's 42,000 acres – big. For POTA, you can actually run this at Lake Dardenelle SP which the map shows as 'in' the WMA, but for WWFF, there are no two-fers. Got to be separate runs. I'm up early and head on Lake Front drive. Several places to pull off there and it's inside the boundary.

It's about a half hour after sunrise, so I try for some DX on 20M. Put 15 DX stations in the log – EU park chasers. Sure nice to have the band open to EU at this time. Not much coming through from the US this early other than New England. Switch to 40M then 30M and the log fills up. Later back to 20M and I'm done in an hour and 30 minutes. 50+Qs in the log.

---

Now it's time to head east along I-40 and finding some other parks. Next up is **Galla Creek, a POTA only park K-7287 still in Pope, AR.** 3,320 acres in size.

“Galla Creek Wildlife Management Area is situated near the Arkansas River and is currently managed by the Arkansas Game and Fish Commission, which purchased the first tract in 1959, with the last tract purchased in 1978.





Historically, the land now encompassed by Galla Creek WMA was used for farming and gathering timber. There are old homesites located in the area, though only rock foundations, wells, and an abandoned barn remain.

Galla Creek WMA offers a diverse habitat for wildlife, as it includes both bottomland and upland forests. Many of Arkansas's popular hardwood trees can be found in this area, including water oak, willow oak, and elm. There are also valuable pine species such as shortleaf pine and loblolly pine. Many pursue recreational hunting at Galla Creek WMA, hunting bear, alligator, crow, deer, quail, rabbit, squirrel, waterfowl, and turkey. Invasive animal and plant species have intruded into Galla Creek WMA. Feral hogs have been spotted in low numbers in the area by remote sensing cameras and direct observation. The invasive plant species in the area include Bermuda grass, Chinese privet, mimosa, and chinaberry."

One only needs 10Q for an activation in a POTA park but a couple dozen go in the log. Jerry, W0GXQ, is busy up in IA now.

--

I'm driving along and see signs for the Cherokee Trail of Tears K-3791. Another day, time for a quick activation for credit. 11 go in the log and that's it. Took 9 minutes including time for the spot. Just 30M.

-----

Next up is **Ed Gordon Point Remove WMA KFF-5094, K-7285 in Conway County, AR**. The reason some of these are both and some not is size. The park has to be over 5000 acres to be in both! This is 8,700 acres in size.



“This 8,780-acre WMA includes 1,027 acres of herbaceous wetland waterfowl habitat, bottomland hardwoods and swamps. Moist soil units and ponds are flooded seasonally and are accessible by boat. Hunting is allowed on most of the WMA. Dog training is allowed in the 140-acre field trail area. Lake Cargile is managed for trophy largemouth bass, crappie, bream and catfish.”

Had a good run of 50+ and left a happy camper.

- - -

Next it was off to **Goose Pond SNA K-7177 POTA only.**

“Goose Pond Natural Area, located in the Arkansas Valley, is a mosaic of open water and vegetated wetlands. Plant communities within the natural area include young water tupelo-bald cypress swamps, shrub swamps, American lotus-water lily marshes, and submerged beds of coontail. Many species of migratory waterfowl visit Goose Pond in the winter months, while a variety of other birds are present year round. The bird-voiced treefrog, a species of very limited distribution west of the Mississippi River, occurs here as well. Goose Pond Natural Area is co-managed with the Arkansas Game and Fish Commission.” Just 392 acres.

Only needed 10Q and put 20Q in the log quickly.

- - - - -

I'm headed east to the next – **Lake Overcup WMA in Conway County AR POTA only K-7302.**

“Lake Overcup is one of central Arkansas' premier fishing lakes. In the 1960s, this large impoundment produced a 1 pound, 14 ounce state record bluegill and two 3 pound, 6 ounce state record white crappies. Panfishing remains extraordinary, and Overcup has also forged a place in the hearts of bass and catfish enthusiasts. Lunker largemouths frequently anchor the stringers of visiting anglers, and Overcup also doles out fast-paced action for channel and flathead catfish. Other popular sportfish inhabiting this fertile lake include white bass, chain pickerels, warmouths and blue catfish.

Area residents donated \$10,000 to help the Game Fish Commission purchase the lake site on Overcup Creek. Lake waters inundated a rich environment of wooded creek bottoms and farmland, and the fertile lake bed and excellent watershed have produced an ideal setting for growing large numbers of big, healthy fish. Boat lanes crisscross timbered waters to provide easy access to brushy, stump-laden fish habitat offshore, while those who prefer bankfishing can relax on the lake's fishing piers or earthen jetty or try for lunkers along the mile-long dam.”



Nice public access area and many spots to run along the western edge. Just a few miles of I-40. A couple dozen Qs go in the log. Ed, K8ZZ/m is busy up in WI (Lafayette/Green). Sometimes I hear him, sometimes he's not there on any band. The sunspot cycle is trying but not coming through consistently yet.

That's pretty much it for the trip and new parks. I put the pedal to the metal and zip further east on I-40, then circling around the west side of Little Rock on I-430 to I-30 headed to Dallas. Lots of miles. When I get down by Arkadelphia, a few hours later, I get off and head to the last new park on the trip. Well, after a frustrating 30 minute backup as the highway has construction and goes down to one lane. There was a ten mile backup both sides of I-30 as one lane each way closed while they fixed a bridge. Creep and crawl at 3 mph for 10 miles. I run some of the counties along the way. Finally you get through the mess. Not far NE of Arkadelphia on I-30. Hope they fix it soon!

### **Terre Noire SNA – Clark County – POTA only K-7188 - 415 acres**

This is a small park – about 8 miles off the interstate. Get there later in the day and put it out. Start on 30m and 15 go in the log. Just a handful on 20M as it's shutting down for the day. 40M yields another dozen.



“Terre Noire Natural Area, located in the Coastal Plain, is one of the highest-quality blackland prairies and woodland complexes remaining in the state. The site is a mosaic

of native herbaceous and woody vegetation that includes high-quality prairie as well as prairie in various stages of restoration. It also includes wooded areas that illustrate the forest and woodland matrix within which the prairie openings existed in southwestern Arkansas. The site is home to a number of rare plant and animal species. The Nature Conservancy (TNC) shares ownership on portions of the area.”

- - - -

I'm out of there in 40 minutes. Getting tired and it's been a busy trip so far. I head to the Super 8 Motel 60 miles away in Hope arriving around dinner time. Been here many, many times! Dinner at Dos Locos Gringos Mexican restaurant. Sat 30 feet away from nearest occupied table and had one of their Kind Of Big Dillas. Very good.

The Super 8 has exterior doors – good – what I like. No common hallways and of course, separate a/c units.

- - -

### **Friday August 21, 2020**

Breakfast consisted of a shrink wrapped plate with apple and small muffin. You can grab and go. Also had cereal there. Made myself oatmeal (put in hot water – but that usually not good enough – to the mix – then I nuke another 30 seconds in microwave). Had 2 cups coffee, ½ cup orange juice then packed up to go. Took the apple/muffin with me as snacks for later. Washed hands in room again.

Eight miles up the road from here is **Historic Washington KFF/K-1106 in Hempstead County, AR**. It was 3 ½ hours to home once I headed that way so I had time on my hands. A quick visit here produced 3 dozen Qs. Bands good at 7:10 am including 20M! 30 and 40M also good. This is a two-fer with the Cherokee Trail of Tears K-3791 as well.

A local park activator and local employee of the park stopped by – N5HOG, Gary. We yakked for a bit about the local parks and activations. He and a friend have done several of the local park units around the area including the Bill Clinton Boyhood Home in Hope (Must run that portable – no parking area). He retired 10 years ago then went to work for the Park Service.

Decided to run **Hope Upland WMA** again. Just ran this a few weeks ago. POTA only **K-7295**. You've got about 4 miles of gravel road to get there. Ran into a nice lady

ranger who confirmed the 'parking lot' is part of the WMA. Sometimes it's hard to tell. Yep, their boundary includes all of the lot she said. Sometimes you wonder as the sign is beyond the parking lot.

Ed, K8ZZ was already up and running in IL now – headed to MI.

It's just a bit after 8am. Put 20 something in the log and call it a day. 30 and 40m cw. Time to head on home. Another 4 miles of decent but 25 mph type gravel roads to get back to paved roads again. Zipped on down the road to the Interstate.

Put out most of the counties on the way home while zipping along at 75-80 mph on I-30. Lots of trucks on the road – maybe 2 cars for each truck but things moving quickly. Back in the Dallas area around noon time.

My route takes me within half a mile of my local park Spring Creek State Forest Preserve, KFF-4423/K-4423. My car decided to head that way for a quickie. What can I say? My car has park auto-drive. Whip off 11Qs for an activation then outta there. I've run this 100 different times! However, POTA keeps track of 'activations' so why not?

Home by late lunch time. Whew! Knocked off a bunch of new parks on the trip. Still there are about 40-50 unactivated parks in AR to get to! So many parks, so little time.

## Mobile Activity in August

At the beginning of the month:

Ed, K8ZZ, was zipping around N Dakota and into MN

Bob, N4CD was over in AR in southwest corner

Bill, K0DEQ made a trip in MO and northern part of AR

Randy, K7TQ put out counties in WA

Ron, KB6UF, put out counties in LA and MS

Mike, KA4RRU took a trip from VA up through WV to MD and PA and back

Barry, N0KV, and Pat, N0DXE, put out many counties along the south half of CO

Ed, N8OYY, put out counties on the eastern shore of MD and some in VA then down into VA for a bit.

Alan, W8OP, spotted out in WV, PA, OH

Jerry, W0GXQ was busy putting out counties in NE. Then into IA then into MN – along with K8ZZ who was also putting out lots of MN counties. Dozens of counties were run. Then later both wound up in IA putting them out there. For days and days. Then Ed, K8ZZ headed through IL and IN to MI. Ed was probably on half the days of August. Jerry headed to SD for many there, then into NE for more, and finally home in CO. Ed was still going strong up in MI.

Bob, N4CD was over in AR on a second trip to western AR

Bob, KA9JAC, put out some in WI

Jim, N9JF ran some in MO

Butch, WY0A, put out counties in KS

We had the OH QSO party with several mobiles to chase around.

End date 8 25 2020

- - - - -

Most active mobile of the month: K8ZZ with over 100 counties

Second place: W0GXQ

It was a good month for CW mobiles. Not so good for SSB types.



# Ohio State QSO Party

Looks like it was a great one this year with at least two mobiles, one rover and perhaps some 'portable' stations out there. Max number of counties worked – one report had 60 counties worked, many chasers had 40 counties worked. The N1NN logging program didn't accept 160m contacts but there were legal. Some just stuck them in the 10M slot instead to get a good score listed. Hundreds of contacts were made on 160M.

From the 3830 contest reflector:

**K8MR mobile - (K3LA, K8MR ops) 1371 cw 79 SSB QSO**

In recent years an OhQP mobile trip was good for about 850 QSOs. We did a bit better this time, what with the SQP challenge, the COVID restrictions giving a lot of people a lot of time, and the five weekend calendar in August this year that gave us the fourth Saturday with no major competition.

Only two hours, 19Z and 20Z, with rate under 100/hr. We saved the best rate for last, 164 in the 0300Z hour. As noted by others, skip zones on 40 and 20 made things tough for close in places. But OTOH there were good signals from far away. Uli, DM5EE, as ZR2A/4 for ten QSOs was especially cool, and I had my first mobile contest JA QSO in years with JO7WXN. Fifteen and ten meters was running the bands with K1LT as we passed through his county.

All the SSB QSOs were from moving people from CW, with in some cases other folks following me from a CW pileup to SSB and/or catching a packet spot in time. I tried a few random SSB CQs with no production resulting.

While others in Ohio reported rain and thunderstorms, we were able to miss that. Only two equipment malfunctions: in MUSK the SWR went way up, but it just took tightening the stud in the mag mount to fix that. And we hit a huge pothole four miles from our end point in Springfield, which resulted in a very flat tire by morning. But thankfully that had no impact on our OhQP efforts, only on our Sunday activities.

In the previous two years I planned my route to start and end near Youngstown to allow my partner, K3LA (a friend since high school) to get up for a Sunday bike ride in Pittsburgh. With COVID cancelling that ride, we combined the OhQP with a 40 mile

ride on Sunday from Springfield to Xenia. That included going past the empty Green County Fairgrounds. I hope that does not jinx that place like I did when I visited HARA Arena after the 2018 Hamvention. Nine days later the tornado did the final job on HARA.

I hope to visit Pennsylvania for one day of their party in October, and there is an outside chance I might make it to New York as well. And a big thanks to all who got on the air for our Party in Ohio!

73 - Jim K8MR

**AE8M mobile - 142 cw 26 SSB - had no comments**

**N8KR Rover - 360 cw 106 SSB**

From Paulding, Defiance, Williams, Fulton and Henry Counties. Used hamsticks on the road, for 20 meters, and in Paulding and Williams Counties. Erected a portable 28 foot mast to the vehicle which supported 1/2 wave dipoles on 40 and 80 meters in Defiance, Fulton and Henry. Operated from the backseat with a TS-590S. Dipoles were very effective but had stray RF in the car which made the laptop touchy when sending CW. Pulled the plug at 8:30 to visit with friends and return home without it getting too late!

**W0ZQ - fixed - MN 160 cw 51 SSB**

Fun to work K8MR/m multiple times, he has good ears. There were a few portable stations on too but it was hard to recognize them without listening to them working another station and seeing a different county sent, wish that they would sign with their county. Fun day on the radio and thanks to MRRC for sponsoring. 73, Jon

**K8TE - fixed - NM 122 cw 21 SSB 41 counties**

What a difference the State QSO Party Challenge makes! While there were many stations I couldn't hear in NM, many of the pileups were unruly and busy! It's fascinating to listen to everyone calling on exactly the same (CW) frequency. Fascinating to me but frustrating for those running them! Put away the decoders and practice receiving more.

After working the one 20m SSB station I could hear, and 10 CW stations, I decided to call CQ OH. With an 8 call, that was a disaster! Apparently, many don't use the SCP. So, after 1649 UTC I used K8TE/5. That may have squelched some, but others continued answering my CQ's. One guy even worked me twice! What is that about? Another from TX had to send everything twice without my asking! He wasn't alone.

As is typical during August in NM, I had nearby lightning. I shut down and disconnect if it comes within 20 miles. The next 10 miles can disappear very quickly! That cost me nearly four hours just when 40m was getting better. After that, the QRN was horrible—no surprise. 75/80m was challenging and 40m wasn't much better. Thanks to all who patiently responded to my "AGN" hoping I would finally copy you. That paid off as six of my last twelve QSO's were additional mults!

I had my Please Copy badge (with a red circle and diagonal line through the text thanks to AE6JV) hanging nearby. It didn't always help. One op said "Geauga County" as if we might understand that through the QRM and QRN. Many ops did the same with their counties and many were not in the Call History requiring repeats. Create and use a script: "59 Geauga GEAU" for your exchange. Use a (good) recording, if at all possible.

Jim, K8MR, was mostly elusive out here. Great job Jim! You're a QSO party animal! I wish I could have made more than the three meager contacts with you. One was a mult and several others that I missed were not. One of the 48 counties I worked was a new one thanks to AE8M in Brown County.

I was also chasing HI ops in their QP, just not any where near as many. While the K-Index was slightly elevated, it never left the green. Propagation wasn't horrible or great, but it was sufficient for those with halfway decent antennas. Dave, KA6BIM, agreed to let me use his antenna farm, but the coax loss to OR was just too much to overcome.

Thanks to all who gave me contacts! I worked many of you twice and five on three bands. Bob, KW8N, of course, gets the Gold Star for four contacts. That isn't easy with my pair of lowly dipoles. Next year, I WILL have one or more towers and beams in the air! Currently, they are configured for (and on the) ground wave and very ineffective. Remember the NMQP the second weekend of April. 73, Bill, K8TE

### **NW8S Multi-Op in Ohio - 652 cw 641 SSB**

The Ohio qso party this year was again a great event. The activity was solid the whole 12 hours. We operated 2 stations with some new equipment this year and found that a lot

of our past issues have disappeared. Everything went as planned except for a inductor knob broke at around 7pm so Tom NQ8O ran home to grab his tuner so we could finish out the party. Great signals from all over the US and beyond. Thanks to all in our log and see you in the next one.

Jay KB8O Tom NQ8O Jon KM8V  
Black River Radio Ops

## Awards Issued

USA-CW V #7	Tom, N4RS	July 1 2020
- - -		
RAS Delaware #74	Ed, N8OYY	Completed 7/26/2020.
RAS N.J.	Ed, N8OYY	Completed 7/26/2020.
RAS Oregon #26	Paul, W7EEC	Completed 7/18/2020.
- - - -		
Roadrunner Award	Ron KB6UF 1625 Last Counties #2	
Roadrunner Award	Ed, N8OYY 225 Last Counties #107	
Roadrunner Award	Kerry, W4SIG 625 Last Counties # 29	
Roadrunner Award #20	Ed, K8ZZ 800 Last Counties	8/17/2020.
- - -		
RAS Mississippi #27	Ron, KB6UF	15 November 1998.

RAS Missouri #28	Ron, KB6UF	8 August 2020
Ran All NC #24	Ron, KB6UF	4/25/2014.
RAS Maine #37	Ron, KB6UF	6/1/2020.
RAS Maryland #33	Ed, N8OYY	8/8/2020.
RAS NJ #28	Ron KB6UF	4/27/2005.
RAS NH #9	Ron, KB6UF	5/27/2006.
RAS NJ #28	Ron, KB6UF	4/27/2005.

- - -

County Challenge Award Level 16 #3      Barry N0KV

Call Combo 1X3 #2 level 3000 Jerry , W0GXQ	7/1/2020
Call Combo 1X2 #2 level 3000 Jerry, W0GXQ	8/5/2020.

- - -

USA-PA "K" #34	Mike, NF0N	8/18/2020.
Single Band #33 – 20M	Ron, KB6UF	11/26/1999
US Presidents #59	Ron, KB6UF	9/6/1999.
Native American #61	Ron, KB6UF	11/20/1999.

# Events for County Hunters

Sept 5 1300z to 6 0400z

1.8-UHF

## **Colorado QSO Party**

CW Ph Dig Name, CO county or SPC

[ppraa.org/coqp](http://ppraa.org/coqp)

Sept 6 1800z to 7 0300z

1.8-UHF

## **Tennessee QSO Party**

CW Ph Dig RS(T), TN county or SPC

[tnqp.org/rules](http://tnqp.org/rules)

Sept 12 1400z to 12 2200z (Note SSB only)

3.5-28

## **Ohio State Parks on the Air Ph**

Park abbreviation or "OH" or SPC

[ospota.org](http://ospota.org)

Sept 12 1400z to 13 2000z

1.8-UHF

## **Texas QSO Party**

CW Ph Dig RS(T), TX county or SPC

[www.txqp.net](http://www.txqp.net)

Sept 12 1500z to 13 0300z

3.5-28

## **Alabama QSO Party**

CW Ph RS(T), AL county or SPC

[alabamagsoparty.org](http://alabamagsoparty.org)

Sept 19 1400z to 20 0200z

1.8-UHF

## **Iowa QSO Party**

CW Ph Dig RS(T), IA county or SPC

[www.w0yl.com/IAQP](http://www.w0yl.com/IAQP)

Sept 19 1600z to 19 2300z (SSB only event)

3.5-144

**Wisconsin Parks on the Air**

WI park abbreviation or SPC

[wipota.com](http://wipota.com)

Sept 19 1600z to 20 0359z

3.5-28

**New Jersey QSO Party**

CW Ph Dig RS(T), NJ county or SPC

[k2td-bcrc.org/njqp](http://k2td-bcrc.org/njqp)

Sept 19 1600z to 20 2200z

1.8-UHF

**New Hampshire QSO Party**

CW Ph Dig RS(T), NH county or SPC

[w1wqm.org/nhqso](http://w1wqm.org/nhqso)

Sept 19 1600z to 20 2359

1.8-144

**Washington State Salmon Run**

CW Ph Dig RS(T), WA county or SPC

[wwdxc.org/salmonrun](http://wwdxc.org/salmonrun)

Sept 26 1200z to 27 1200z

1.8-28

**Maine QSO Party**

CW Ph RS(T), ME county or SPC

[ws1sm.com/MEQP.html](http://ws1sm.com/MEQP.html)

- - - - -

## Announcing the 2020 CW Open

The CW Open for 2020 is now just around the corner. This year might be a record setter for both participation and for QSO counts. If the weekly CWTs, ARRL Field Day, the IARU contest and more are any indication, it should be a great time. Hopefully the propagation will also be favorable and the bands will be filled up with



GLOBAL signals from all three ITU Zones.

As in the past, the CW Open is scheduled for the first weekend of September.

The three sessions are as follows:

Session Date Time1

1 Sept 5 0000 –0359z

2 Sept 5 1200 –1559z

3Sept 5 2000 –2359z

We all probably have more time on our hands this year, so hopefully participation will be up for all three sessions. However, should your schedule not allow three session participation, please jump in for 1 or 2 sessions. It is also a great time to start thinking about putting your 2020 teams together. The website has been updated for 2020 (Thanks Theo –SV2BBK), so if you have your team feel free to get it registered.

Just follow the instructions on the CWops web site on the CW Open drop down.

<https://cwops.org/cwops-tests/cw-open/>

That's all folks. See you next month. 73 de N4CD