

County Hunter News

November 1, 2014

Volume 9, Issue 11

Welcome to the On-Line County Hunter News, a monthly publication for those interested in ham radio county hunting, with an orientation toward CW operation.

Contributions of articles, stories, letters, and pictures to the editor are welcomed, and may be included in future issues at the editor's discretion.

The County Hunter News will provide you with interesting, thought provoking articles, articles of county hunting history, or about county hunters or events, ham radio or electronics history, general ham radio interest, and provide news of upcoming operating events.

We hope you will enjoy the County Hunter News. Feel free to forward, or provide links. Permission is given for copying or quoting in part or all provided credit is given to the CHNews and to the author of article.

CW County Hunter Nets run on 14.0565, 10.122.5, and 7056.5, with activity occasionally on 3556.5 KHz. Also, there is SSB activity now is on 'friendly net' 7188 KHz. The cw folks are now pioneering 17M operation on 18.0915. (21.0565, 24.9155, and 28.0565 when sunspots better). Look around 18136 or for occasional 17M SSB runs usually after the run on 20M SSB. (21.336 and 28.336)

You can see live spots of county hunter activity at ch.W6RK.com

For information on county hunting, check out the following resources:

The USACA award is sponsored by CQ Magazine. Rules and information are here:

<http://countyhunter.com/cq.htm>

For general information FAQ on County Hunting, check out:

<http://countyhunter.com/whatis.htm>

MARAC sponsors an award program for many other county hunting awards. You can

find information on these awards and the rules at:

http://countyhunter.com/marac_information_package.htm

The CW net procedure is written up at:

<http://www.wd3p.net/ch/netproc/netproc.htm>

There is a lot more information at www.countyhunter.com . Please check it out.

Back issues of the County Hunter News are available at www.CHNewsonline.com

Want county lines on your Garmin GPS?

<http://pages.suddenlink.net/w4ydy/hamlinks.html#County>

Download the file to a flash card that fits in your GPS unit, turn it on, and the county lines should appear!

De N4CD, Editor (email: telegraphy@verizon.net)

Notes from the Editor

1) N4CD Rumblings

This month has been great for QSO Parties – if you needed counties in many states, you could have filled in hundreds and hundreds. The Texas Party at the end of last month started things off for the month of November, then we had the CQP, NJ QP, PA QP, Ohio, QP, AZ QP, IL, SD, IA.....it was a busy month and we report on all of them.

Ten meters worked for some during the month. During the CA QP, the band was nicely

open. For other contests, it was mostly 15m and down.

Propagation has been 'decent' but the A index stays up there a bit. The DX is still catching lots of counties. Mid month there were days of quite high A index making things more difficult (big solar flare). Later in the month, conditions were 'poor' to 'fair' for days in a row, day after day.

Weather wise - another fall 'storm season' is upon us with cold fronts moving through and triggering storms and rain. So far there has not too much snow and ice to slow down the northern folks. Halloween is just around the corner, and in November we go back to standard time. Now the sun doesn't rise here till 7:30 am, but I'm awake a lot earlier. I'll miss those 'long days' of daylight. From the QTH here, just a short trip or two as I think I'm sort of coasting after the last push this summer to get to those far away counties. Likely I'll be headed back east for the holidays. The big summer season of travel is over for most, and like many others its into family , schools, clubs, local activities until the spring and the big trips once again.

3) USS Missouri – in movies

One night just after arriving home, I was channel surfing and came across a movie on one of the channels – and the movie was a 1990 type James Bond type thriller involving the Battleship Missouri! Well, after the tour in HI, I watched the rest of the movie. Not necessarily technically accurate, but some good footage. If you are on Netflix or other movie service, if you like James Bond type thrillers, this is a good one.

From Wiki - **Under Siege**

Under Siege is a 1992 American action film directed by Andrew Davis and starring Steven Seagal as a former Navy SEAL who must stop a group of mercenaries, led by Tommy Lee Jones and Gary Busey, on a U.S. Navy battleship. It is Seagal's most successful film in critical and financial terms, including two Academy Award nominations.

The battleship USS Missouri (BB-63) arrives at Pearl Harbor, where George H. W. Bush announces that the ship will be decommissioned in California, making the trip her final voyage. Casey Ryback (Steven Seagal), a Chief Petty Officer assigned as a cook,

A CH-46 helicopter lands on the ship's deck with a musical band, along with Playmate Jordan Tate (Erika Eleniak) and a group of caterers who are really a band of mercenaries

led by ex-CIA operative Bill Strannix (Tommy Lee Jones).

Strannix' forces seize control of the ship with the help of turncoat Krill. Several officers are killed, including Captain Adams. The rest of the ship's company are imprisoned in the forecabin, except for some stragglers in unsecured areas. Strannix intends to steal and sell the ship's Tomahawks by unloading them onto a submarine he had previously stolen from North Korea.

Strannix and his men take over the ship's weapon systems, shooting down an F/A-18 Hornet sent to investigate, and plan on covering their escape by using missiles to obliterate tracking systems in Pearl Harbor.

The Pentagon responds by ordering an air strike that will sink the Missouri. Strannix regains control of the ship's weapon systems and loads the Tomahawks onto the submarine. With the aid of a retired World War II Gunner's Mate, who was among the six sailors rescued earlier, Ryback uses the battleship's guns to sink the submarine, killing Krill and everyone on board.

Strannix suffers a major concussion from being in the proximity of the Missouri's guns as they are fired. He launches two nuclear-tipped Tomahawks towards Honolulu. As the sailors recapture the ship, Ryback finds his way into the control room, where he is caught off guard by Strannix, both of whom realize they know each other from their past covert experiences. Ryback manages to disarm Strannix, and the two engage in a knife melee. Eventually, Ryback gains the upper hand and stabs Strannix through the top of his head before ramming him into a computer monitor. Ryback then takes the launch code disk needed to self-destruct the Tomahawk missiles. One of the two missiles is destroyed by an F/A-18 Hornet. The codes are dialed in and the second Tomahawk missile is deactivated just in time, and the Navy calls off its airstrike.

There's another movie out there called Battleship(2012). It too features the USS Missouri.

This time, aliens from the Planet G invade Earth in 1995. They sink a bunch of navy ships and things aren't looking good for humans. The aliens seem to be able to sink most modern technology easily. Finally, a crew decides to re-activate the USS Missouri, and use it to wipe out the alien space ship in the waters off Hawaii. The film crew spent five days filming on the battleship to make the movie.

4) **Second District AK**

from the K3IMC forum:

KL7DG - Donn - Aug 4 2014 to May 16 2015 - SSB and Data -

I am teaching 5th grade in a Yup'ik Eskimo village on the Yukon river called Pilot Station for the 2014-2015 school year. The village is located in Judicial District 2 (Wade-Hampton Census area). I will be operational mainly in the afternoons and evenings when able. I plan on supporting as many contests as possible and get this rare Alaska district on the air enough to give as many hams as possible a chance to add it before I return to the lower 48 for the summer. I am currently active with an Icom 746 pro 100w radio and a Carolina Windom. Future plans include getting a school club going here and having the students operate a club station when I am here.

Send email requests to dbackfanwa@aol.com

Those needing the Second might also check with AL7X, Ramon, in Nome, AK, to see if he has his beam fixed and operational again.

5) **Oops**

A gremlin got into the last issue (what, only one?).....the county hunter I ran into in HI - Stan's call is AC8W..... it wasn't printed right in the last issue.

Salmon Run – More Comments

WW7D mobile

But it's true: the 2014 Salmon Run has come and gone. And what a run it was!

Personally, it was one of my best contest efforts, in the sense of station set-up and reliability, ease of operations, planning, and execution. Unfortunately, the propagation fairies were having some fun playing tricks on us. Even so, I get the sense that many of us were still having a good time. Although I didn't top my score from last year, I am still pretty pleased with the results.

Route

The route is pretty much a tweaked version of the one I ran last year. I posted the details for this year here. Basically, I worked Western Washington counties (KING, PIE, KITS, MAS, GRAY, PAC, THU, LEW, COW, WAH, CLAR, and SKAM) Saturday, and Eastern Washington counties (YAK, KLI, BEN, FRA, ADA, LIN, GRAN, OKA, FER, and DOU) on Sunday.

As it turned out, I kept to the route and stuck closely to the schedule. Doing the route for a second time has its advantages—this time there were no wrong turns or other unwanted excursions.

Platform

The Salmon Run comes at a very busy time of the year for the mobile contester. The week before the Salmon Run is the ARRL September VHF Contest. The Monday after the Salmon Run is a 2m VHF Sprint. On top of that, the Salmon Run happens just as things get very busy for me at the University of Washington, as we ramp up for the school year that starts the next week.

The Salmon Run platform was a little more complicated than necessary because it included stuff left over from the VHF contest and allowed me to quickly set up for the sprint the Monday after.

Last year, I did the Salmon Run in my 1988 Toyota pickup truck, with two homebuilt screwdrivers in the back of the bed on each side, a Hustler stalk toward the cab, and a front rotor with a short 2m yagi and 6m hex beam on the front. The VHF antennas were good for a few QSOs with Gabor, VE7JH, who I knew would be on a mountain top location with good reach into Western Washington. But I hadn't heard from Gabor about a Salmon Run effort this year. Additionally, I had built a third screwdriver that I wanted to mount on the front. That would mean I could go Hustler-free for the Salmon Run.

So, I again installed two screwdrivers on the back (with an unused rotor in place for the Monday sprint):

For the front antenna mount, a chunk of aluminum bar was fashioned into an antenna mount using the rotor:

The front screwdriver had a whip length that made it useful for 10m to 75m. The rear driver-side antenna worked on 15m to 80m, and the rear passenger side antenna had a whip with a capacitance hat that allowed it to work very well from 20m though 80m. With three screwdrivers, it would give me the ability to move between 15m, 20m, and 40m during the day with no antenna reconfiguration, and between 20m, 40m, and 80m at night.

Inside the truck was a rack of gear that included two Yaesu FT-857Ds, one as a second HF rig (with an LDG tuner) and one for 6m and 2m, a Kenwood TS-480SAT as the primary HF rig, an Alinco 2m FM rig, and 170w bricks for 6m and 2m. To the left of the rack can be seen an antenna relay control box that allowed me to switch antennas between the Kenwood and Yaesu rigs, and between the VHF equipment, and a paddle, a Tascam DR-1 digital recorder, a K1EL Winkeyer, and a switch to move the keyer between three rigs. A rotor control box—not used for this contest—can be seen in front of the pantry. One dual antenna control box for the rear antennas and a single control box for the front antenna can be seen near the midline.



WW7D Rig Set Up

The operating position included heads for both HF rigs and two cell phones. One phone

acted as a 24 hr clock. The other phone ran an application (“Where Am I”) that continuously reports the current county—just in case I got confused about my location.



WW7D operating position

Inside the truck was a rack of gear that included two Yaesu FT-857Ds, one as a second HF rig (with an LDG tuner) and one for 6m and 2m, a Kenwood TS-480SAT as the primary HF rig, an Alinco 2m FM rig, and 170w bricks for 6m and 2m. To the left of the rack can be seen an antenna relay control box that allowed me to switch antennas between the Kenwood and Yaesu rigs, and between the VHF equipment, and a paddle, a Tascam DR-1 digital recorder, a K1EL Winkeyer, and a switch to move the keyer between three rigs. A rotor control box—not used for this contest—can be seen in front of the pantry. One dual antenna control box for the rear antennas and a single control box for the front antenna can be seen near the midline.

The operating position included heads for both HF rigs and two cell phones. One phone acted as a 24 hr clock. The other phone ran an application (“Where Am I”) that continuously reports the current county—just in case I got confused about my location.

Behind the passenger seat sat a second battery in a fiberglass box, an N8XJK Super Booster, and an antenna relay box.

The Contest

Saturday

I left Redmond, WA about 7:30 am (PDT) for the 9:00 am contest start, and arrived on the KING–PIE starting point about 30 minutes early. That gave me plenty of time to test out the equipment, get the antennas set up, and listen to the bands. I found that 20m was in fantastic shape with lots of Scandinavian stations booming in for the CW Scandinavian Activity Contest. I could hear some activity on 40m and 15m.

As 9:00 am approached, 20m seemed to fade a bit. I spent the first 20 minutes trying to work Scandinavian stations, but only managed four before N6MU found me on CW. We also worked 20m Phone, a pattern that would continue through the contest. After 20m phone failed to provide many QSOs, I went to 15m CW and managed to work a couple of stations in the SC QSO party. Before leaving the county line, I tried 40m and managed to work BC and a few WA stations.

To give you an idea of the band conditions, last year from this spot, I made 36 contacts (times 2 because of the county line), although 4 of these were with VE7JH on 2m and 6m SSB and CW. So, let's say 32 contacts, about 2/3rds on 20m. This year I made 15 QSOs, 2/3rds of them on 20m. The one interesting difference is that this year I worked Sweden, Finland and Norway. Last year produced only North America QSOs at that first stop.



Gray Harbor / Pacific Line, WA – WW7D/m

Twenty meters was modestly productive for the next few counties. I arrived at the Grays Harbor–Pacific county line at 2:10 pm, and finally got a serious run going, but on 40m. Twenty continued to be marginal. At 4:00 pm, driving through Grays Harbor, a few Japanese stations popped up on 15m along with a handful of U.S. stations. Twenty

meters seemed to open up around 5:00 pm while I was on the Thurston—Lewis county line. An hour or so later, it became unproductive.

Speaking of the Thurston—Lewis county line.... When I got to the county line, I was backing my truck up to be on top of the line. The rear passenger screwdriver—the one with the capacitance hat—snagged a road-side sign. As I continued to back up, it bent the antenna forward and broke it at the base. And it was my best antenna, but I still had two screwdriver antennas to work with. The repair is pretty simple...if I had carried a spare part, I probably could have fixed the antenna in about 10 or 15 minutes.

Eighty meters opened up about 7:30 pm (PDT) while I was on the Wahkiakum—Cowlitz county line. I got a run going on CW and then an even better run on Phone, and it was pretty much just 80m for the rest of the evening.

At midnight, I was in the hills above the Columbia River on the Clark—Skamania county line. In previous years, I would stop at a hotel in Washougal, WA about 20 minutes West of me, and then wake up at an obscene hour for a 3 hour drive to E. Washington. I'm a morning person, so I'd rather drive late at night, than get up early. So this year, I decided to do some of the driving at night. I drove 1.5 hours to The Dalles, Oregon to spend the night in a hotel.

Sunday

I was out of the hotel parking lot by 7:00 am (PDT) for a 2 hour drive to the Klikitat—Yakima county line.

The fuel gauge read a little under 1/2, but I decided to get gas closer to the start, because that way I could make it through the day without refueling. That was a mistake. After crossing back into Washington, I came across a sign saying there was no gas for 85 miles.

That brought back memories from last year, where I was getting low (but not critically low) on gas by the time I hit Prosser. I had less fuel in the tank this year. My gut feeling and my calculations on fuel range suggested that, if I drove for fuel economy, I should just be able to make it to Prosser—but with little reserve. Hence, I prioritized fuel economy. All I really had to do was make it within 2 miles of Prosser, since that last 2 miles was a steep, winding descent into the city, where I could coast within reasonable walking distance of a gas station.

I arrived at the Klikitat–Yakima county line with about 10 minutes to spare, and spent the time re-configuring the two remaining screwdriver antennas. At 9:00 am, the fun began on 20m with a long run of QSOs, including stations from Poland, Slovakia, Germany, Hawaii, and Japan!

After leaving the Klikitat–Yakima county line, the schedule called for a long, non-stop drive through Benton, Franklin, Adams, Lincoln and Grant counties before stopping again on the Okanogan–Ferry county line. Although gasoline with the first thing on my mind, I did manage to work a pile of stations on 20 CW in Benton County before the long descent into Prosser.

I recalled from last year, that the gas station took a long time to come across just following my route, so I headed to the center of town looking for a fuel station. Spotting no fuel stations, I chose to park and find out where a nearby station could be found. I got out of the truck to call a friend who could look it up more quickly than I could on my cell phone. The friend didn't answer, but in the few feet I walked, I spotted a gas station right around the corner. Problem solved.

My error in fuel planning put me about 12 minutes behind schedule. I was able to make that up en route, and was back on schedule before Grant County.

With only one exception for 15m, I stuck to 20m CW and phone as I worked my way North. Conditions were fair to good on 20m, just not spectacular.

I had planned for it to take about an hour from the Grant County line to the Okanogan–Ferry county line. In reality, this took only 30 minutes. After a 20 minute run on 20m, I went to 40m, and after a slow start managed a good run on CW and then phone. I left the county line 25 minutes early to head for the last stop of the day, the Grant–Douglas county line.



Okanongan/ Ferry County Line

Twenty minutes later, on the Grant–Douglas county line, I had a small run going on 40m, and finished off with a small 20m run (that included working Iceland, for a new multiplier). The last 15 minutes proved almost totally unproductive. I worked W6AFA on phone, but couldn't get any responses to my CQs. Still, I finished with a smile, knowing that everything went pretty darned well.

Results

The next week was spent entering QSOs into the computer, checking for typos and dupes, scoring, and hand-creating the Cabrillo file.

The result was 824 QSOs, 549 CW and 275 phone.

For multipliers, I worked 43 states, missing LA, MA, ME, NE, RI and VT. I only worked four Canadian regions, BC, MAN, MAR and ON. Thirty three of 39 counties showed up in the log, the missing counties being BEN, DOU, FER, JEFF, LIN, and WAH. And there were 11 DX multipliers: DL, G, HA, I, JA, LA, OH, OM, SM, SP and TF. The net was 91 multipliers.

Last year I worked 972 QSOs (775 CW and 197 phone). But what was lost in QSOs, was nearly made up in multipliers: last year I worked the same number of states, one more Canadian region, seven fewer counties, and seven fewer DX entities

<http://ww7d.wordpress.com/2014/09/28/ww7dm-does-the-2014-salmon-run/>

Mobile Activity

starting 9/26

W0GXQ, Jerry, headed to IA and back via some much needed counties in ND.

N7IV, Jack, was out in ND in northern counties.

WA9DLB, Tony, was spotted in IN, KY headed to SC,

N0KV, Barry, and Pat, N0KV, headed east from CO all the way to the coast and back.

B0b, N8KIE headed to SC via FL and then back to MI.

W0FP was spotted headed east from MO to SC.

AB7RW headed east on an extended trip. Had fuse problems with the IC-706 but got them solved.

Jack, N7IV, headed over to MN/WI again. Later back to SD.

KB0BA/N0XYL were out. Sandra noted:

“Lowell and I are home again and want to thank everyone for riding along with us on our September trip! We covered 103 counties in Illinois, Indiana, Kentucky, West Virginia, and Ohio. It only took 3300 miles! The roads in Kentucky and West Virginia can be a challenge, but we'd covered them before so we knew what we were facing. Lowell put a number of the counties out on CW on both 20 and 40 meters. H”

- - -

Sandra and Lowell were also out again in Oct down to KY and back around through MO.

Cheryl and Mike, KJ5PQ/N5UZW, were out again putting out the counties on data

modes in WI. Almost every weekend they were busy on the road.

AF3X headed to SC and back.

WA3QNT was on the road

N4JT headed to SC and back.

AA9JJ and N9QPQ, Frank and Kay, headed east to SC and back via IL.

K7TM headed east – then back through NM to home the long way.

Ed, K8ZZ, was spotted in Northern Michigan.

Mike, NF0N, went mobile for the 'rare NE' day running many county lines NE0QP was also on the air.

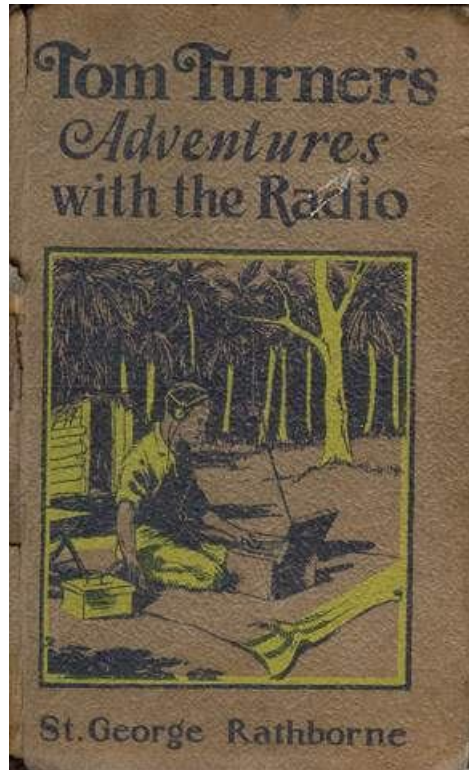
KJ8V/KJ8W were on the road – spotted in OH and MI.

N7IV took a big loop, wound up in CA and OR then back around to home.

Jeff, W9MSE, was on the road mobile on a few trips.

Terry, WQ7A, headed to OR for a few counties.

Book Review of the Month



Tom Turner's Adventure with the Radio – 1924 – St George Rathbone

Digging into the further recesses of obscurity, this month's review is a book printed by a little outfit in WI during the boom years of the 1920s - in 1924 when broadcast radio was just getting started in a big way. This is a small book about 4x6 inches and 210 pages or so. It's not very popular – not even listed on the big book seller sites. I snagged a paper copy for \$1.98 and the postage was \$3.50 to my door so I took a chance on it to see if it had any real 'radio content'. This book was written for the 'youth' market of the day.

Three youths, Tom, Specs, and Hop head out for a trip to Cat Island in the Gulf of Mexico on a sailboat – the Billbug – from Gulfport. It's not too far to Cat Island – they should be there long before dark. Unfortunately, the wind dies, then a sudden squall

approaches from the west – and they are in the midst of a thunderous storm that rips their sails, and damages their boat, and blows them miles off course. They wind up on a small island with their wrecked sailboat which is now useless.

Fortunately they have a few days supplies. It turns out they have landed on Maximo Island, which was rumored to be a pirate hangout long ago. It's uninhabited now. Unfortunately, it's being used by rum smugglers during Prohibition. They find a cache of hidden cases of rum and later that night see a dozen men land on the island from a large ship, and haul cases of booze into the hidden cave. That night, a large plane lands on the island, and speedboats arrive to haul off more of the booze. Four of the smugglers stay on the island.

The youths are running out of food and hatch a plan to 'stumble' upon the 'fishermen' and request a ride back to the mainland when their 'fishing vessel' arrives. It's not a good idea as the smugglers decide to hold them there.

Meanwhile, Tom has a portable radio – which they listen to at night. They interest the 'smugglers' into listening. Turns out it's more than a 'listening set' and Tom goes about sending out a call for help once an hour in between radio programs. After a few nights, the SOS message is picked up and the Revenue Boat comes, catches the smugglers and takes our 3 youth off the island and back to safety.

Hardly any radio content, even less detail.....but it's another scratched off the list of early juvenile radio fiction. It took less than 3 hours to read, and you'd be best off just skipping it. Hi hi

From Wiki:

St George Henry Rathborne (26 December 1854 - 16 December 1938), who also wrote as Harrison Adams and many other names, was a prolific American author of boys' stories and dime novels. He is believed to have produced over 330 volumes of fiction in the course of a 60 year career. He had a strong proclivity for and obvious skill in producing outdoor adventure stories.

- - - - -

This book is currently number 976,149 on the Amazon best seller list. If you read 3 books a day, every day of the year, it would take you about 1000 years to read every 'more popular' book first.

On the Road with N4CD - TQP

The Texas QSO Party comes up once a year – the last weekend in September. I'd be in town for this one, so decided I'd play mobile and go out for some counties. Wow! I checked the planned trips page. K5YAA was set to run 42 TX counties and they would be in the northeast area down to the Austin area. Hmm.....that would be a normal day trip for me. To the NW, W5CT was set to run a bunch as well as WC5D. No sense going that way. Wherever I looked, there would be at least 1, sometimes 2 or 3 mobiles going through the counties, other than far west TX. That takes a day drive just to get out that way! W3DYA would be doing the NE and east TX counties. That's on cw. Some SSB mobiles would be running many of the same counties. It was set to be a great TQP with most, if not all, counties on the air. All 254.

So I decided to just do a easy one day loop to the east. Yep, a couple mobiles would hit those counties, but that is all the more fun! The radio was still packed from the trip so it was into the car with the radio. I forgot to take along the spotting pad. Oops. My bad. The weather all over TX was supposed to be great – no rain, temps in the 70s to near 90, cloud over cast to reduce the high sun levels. Excellent weather for putting out counties. The radio conditions turned out to be not so nice. So-so is a good word to describe them. I should have had 15m as it likely would have produced lots of contacts.

40M had lots of RTTY on it, but it wasn't bad here. Likely the coast was drowned under the RTTY QRM.

Not much to report. When the spot hit, IF it did, the activity doubled. I only had 40 and 20m, (plus 30 and 17 but they don't count in QSO Parties). Could have used 15m. It was even better on Sunday when band conditions went from not great to middling. 40M was weird on Sunday with local stations 75-150 miles away loud, and only propagation out to 300 miles at best – and not strong. The handy sunspot indicator listed 20 and 40m as 'poor' with 15m 'good'.

Saturday worked out OK – hit Grayson, Fannin, Delta, Lamar, Hopkins, Wood, Rains and Rockwall then back home. Filled a couple log pages and was waiting for W0BH to run Deaf Smith, one of 3 needed in TX. Well, he ran it, but it looks like only on 20M and that was not going to work at that distance. Dang. Missed again. Third year in a row now. Don't think he ever went to 40M because I was listening real careful for him. All 3 of the counties I needed were scheduled to be run. Maybe I'd catch the other two

on Sunday.

Sunday I stayed home and waited for W0BH to get to Childress. He was spotted on 20 and 15M in Childress, but never seemed to have made it to 40M. Tuned and tuned 40M waiting for him. Nope....next thing you know he was in another county. That's 250 miles away so no hope for 20 or 15M from here. I think he lost his 40M antenna on Saturday – never heard on 40M after noon Sat.

Well, that left K5YAA for Comal. He was going to 40M most of the time. Nope....spotted only on 15m in Comal. Must have been one of those 'make five and leave' places – enough to get county credit....Missed him too....not to worry, NO5W would hit it. 40M? Nope. Skunked once again. He ran through it on 20M and not a peep heard on 40M. Oh well! Maybe next year I need to go to IL to work TX?

So it was 0% getting counties I needed. Dang. But I least I gave out a few hundred QSOs from the mobile and from home to do my part to keep TX on the air. Must have been 100,000 plus contacts made. The mobiles were busy!that despite 'rotten conditions' of A=15, K=3, Aurora =7., and 'poor' conditions on 40m and 20M.

I did make 5 contacts on 10M, one local and 4 others. (NT2A, and two French stations and a DL). Otherwise, calling on 10M didn't do much other than waste electricity.

Hope you had fun. We've got a few more good QSO Parties coming up! The bands should be hopping. Texas was 'on the air' for the TQP.

County Sign Database Project

Contributions were made by Ed, KN4Y, Darl NA8W, OH3JF/K8ZZ, KC7QOP, AI5P, KV4DX, W0GXQ and AB7NK/K7SEN.

Here are some of the ones they submitted



AB7NK & K7SEN Lemhi ID



Ed, KN4Y at Lanier, GA



Darl, NA8W, Breckinridge, KY



OH3JF & K8ZZ Kidder, ND



N4XML Georgetown, SC



AI5P McKinley, NM



KV4DX Cocke, TN



Harding SD – W0GXQ

We are approaching 2700 county line signs in the database. Gary, K4EXT, has a backlog but they are getting there a dozen or two a month now.

Texas QSO Party

The facts: There are 254 counties in TX. More than any other state. You can add the counties in a couple states together and still not get there. You can drive the 1500 miles from Texarkana headed to Los Angeles, and half way there to CA you are still in TX (750 miles) There are roads in TX with 80 mph speed limits, and one with a 85 mph speed limit (toll road). There are counties with a million people and counties with 100 folks. Probably 2/3rds the counties have no active HF hams. When it comes QSO party time, the mobiles head all over the state to make this one of the best QSO Parties there are. Hope you found time to participate!

It looks like the weather was good other than in the very south tip of TX, which seemed to be under some heavy rain for a while. The rest of the state was clear and a warm fall day. Lots of clouds were around to keep the temps down and the UV levels down a bit.

From the 3830 reflector:

NM5G mobile - 280 ssb qso

Worked 15 of planned 35 counties.

Murphy visited early and often. On Friday Qs were made on each of the bands. 15 and 20 are covered on a 5 inch Hi-Q screwdriver, and 40 is covered by a Hustler. I had a report of distorted audio on the Hi-Q, so added some ferrite clip-ons to the coax. That seemed to fix the problem. On the trip back home, the antenna mount for the Hustler loosened. It was tightened.

Saturday morning I left to pick up my driver, Skip K5LLR, in Brenham. I stopped for coffee and found the Hustler was loose again. Not sure why, but I replaced the Hustler with a hamstick and proceeded on to Brenham. It was still okay when I picked up Skip.

We had breakfast and gassed up for the first operating position, Washington-Austin county line. After hooking up the PC, connection via USB-RS232 to N3FJP could not be found. PC re-boot solved that problem. SWR

was infinite on all bands. Tape used to attach the new ferrites to the Hi-Q was the problem on 15 and 20 (shorted coax shield to antenna). Removed tape and ferrites hung low like decorations seen on some pickup trailer hitches <grin>. 40 mount was loose again. Tightened again and SWR was a bit high, but below 3. All of this activity put us more than an hour late.

Getting reports of distorted audio again on 15 and 20. Either the ferrites are the wrong mix, or there needs to be additional grounding on the antenna mount (trailer hitch), or both. Reducing power, turning off processor and reducing mic gain got me back to where other stations could understand me. However, only the strongest stations could pull me out over the noise on 20.

SWR on 40 got progressively worse during the day. During evening pit stop found antenna mount was loose again. Tightened again, but this time SWR went to infinity. Found the cheap 3/8 x 24 stud was pulling the center out of the coax connector. That was the end of 40 meters, because the Hi-Q would not resonate anywhere on 40. I think this means it wants a better ground. To add insult to injury, the next morning we found the stinger on the hamstick was gone. It must have vibrated loose and unscrewed itself.

So now we are limited to running 15 while moving, due to ignition noise on 20 from the Silverado, and limited to 15/20 while parked at county lines. At least there were no battery issues as I had a dry cell battery installed to run the radios only. It weighs 45 pounds, and delivers 1200 amps for 11 seconds, a real brute! It is designed for those high-end mobile audio system sub-woofers. Works great.

Considering the above problems, it is surprising that I made 280 contacts. It was frustrating at times, but still a fun time.

73, Keith NM5G
TQP Coordinator

W3DYA mobile 1033 cw qso

Thanks to everyone who followed me around. Extra thanks to those who spotted me; it really makes a difference. Sorry I didn't finish the last few counties on my Sunday list; didn't have as enough 75 MPH roads.

15M was open most of the weekend; 10M very limited.

I had the rig shut down several times Saturday. I added one RF choke and rearranged some cables after stopping and Sunday was fine. I'm sure a few were surprised when I disappeared for long seconds!

Usually I know most of the calls, but this weekend I had a bunch of new ones; sorry for my confusion but glad you showed up. Without fixed stations, mobiles would stay home, too!

Great weather, no rain, and sun limited by nice clouds much of the time.
73, Norm, W3DYA

KS5A Mobile 361 cw qso

I have been doing some work in Texas and decided to take a break for some mobile fun and run counties for the entire two-day contest. Building a route the day before the start, I knew I was taking a chance being solo with only two band antennas, one radio, one laptop and one paddle. What the heck, it has been years since any equipment has failed me - not that I could do anything about it while 1K miles from home.

Positioning started a couple of hours before the party's opening bell - in the rain. Did I mention rain, rain, or more rain? It was constant rain with spurts of heavy downpours in south Texas, and it lasted for 10 of the 12 hours I was out the first day. That shot the idea of saving time by running county lines as I did not want to sit on the side of the road in those conditions.

Water was on the roads, deep enough to pull the truck to the side when driving into the flooded parts. One oil field worker rolled his company truck and closed the 2-lane for about an hour.

Band conditions were definitely better than weather conditions. I copied most of the country with a few EUs getting through. Pileups were manageable and normal - sometimes slow but gang busters when one was spotted. Decorum was really pretty good.

Reaching Starr County, weather had been the only negative. I was setup and ready to go when the rig performed a no-notice, smoke test - and failed!

The receiver was fine but nada on transmit. The “aah crap”, fried-electronics smell left no doubt. I’m done, and from the most distant point on the route back to the QTH.

Oh well, no reason not to stop for chow now, before the long trek back in the rain!

I know several of you were close to picking up a few bonus points with me . Sorry about that. Thanks for all the Q’s and especially your patience as I worked through the pileups. Also, thanks to all the sponsors for another great party.

W5CT multi op mobile 163 203 ops W5MJ K5PI

Madison and I did our third TQP mobile adventure this year and had a great time! After two years of wrestling with RFI to almost everything -- including the vehicle - Madison decided it was time to trade in his Jeep. His new 2014 Chevy Traverse was a dream - smoother ride, zero vehicle RFI, big gas tank, and lots of cigarette lighter power plugs.! But of course it took a good bit of work to get it ready for HF mobile. Madison got the antenna mounts adapted for the new vehicle, set up grounding straps, routed a bunch of cables, got the radio and other gadgets mounted, etc., etc. I worked on the route, software setup and wrestled with a wireless serial port adapter that we ultimately didn’t use. We did a couple short test runs before TQP, fixed a few bugs, and felt very ready to go.

We modified our last year’s route somewhat, to start from Brownwood so as to give us more time in the rarer northern counties. We also added in a few more county line stops. We had a few challenges staying on schedule, but we were able to catch up on Saturday. On Sunday, we fell 40 minutes behind and didn’t make to Falls and Mills counties as planned.

We were delighted to have very few technical issues this year. In spite of our testing, 15M RFI crashed our computer twice in a row, so we focused exclusively on 20 and 40. We had a little RFI into the Winkey on Sunday afternoon, but a reboot finally took care of that. We’d spent some time refreshing our skills

with the CQ/X software, so we were able to hit the ground running. Thanks again to NO5W for a fine program and outstanding support.

This year was a substantial score increase for us, both in QSOs and mults. I think the key must have been Madison! He did about half the operating this year, as opposed to about a third last year. He had some serious rate working, especially Saturday afternoon on 20 CW. Good show, OM! Next year, I'll work on teaching you a good Texas drawl so you can work more SSB. !

Robert K5PI

N5NA – mobile – 1540 cw....

The TQP was my third QSO party in as many weekends. I operated the ARQP and SCQP the previous two weekends. I bought a new truck the day before heading to AR. When I completed the TQP I had 5200+ miles on the odometer. I think I'll stay home for a while!

The installation in my new truck was a quick, temporary, install with my coax and antenna control cables running out both doors to the bed of the truck. Luckily I had no RFI issues into the truck or my equipment. However, I have terrible engine noise on 20m. The other bands aren't too bad.

Since my noise level was so bad on 20m I tried to operate as much as I could on 15m but often I just couldn't rustle up any callers, even though the band was open. So, even with the engine noise I made the most QSO's on 20m. I guess the K3 NB was doing more good than I thought. For those who called me on 20m and I couldn't copy, I apologize.

Thanks to everyone who called! And an extra special thanks to my wife, K5AKS, for driving me through AR, SC, and TX!

73, Alan N5NA

K5FRS mobile - 12 cw 99 ssb QSO - with ops N5AC KF5HFJ

(spotted at Burleson/Lee line in TX)

W0BH multi op mobile with AD0DX

2014 Texas QSO Party by Bob/w0bh

Friday

Ron/ad0dx enjoys the TQP as much as I do, so we decided to team up once again for a Mobile Multi-Op effort through the Texas panhandle. Ron drove down to Hesston from Kansas City on Friday afternoon. When he arrived, we spent some time testing out the radio setup before we left.

This year, we decided to try multi/multi operations at county line stops. To supplement the IC-706MkIIG, I added an IC-7000 to the back of the Astro van. In my experience, there are two essential "extras" to mobile operations.

One is a DC-DC converter for each computer to totally eliminate the noise problems inverters cause. The second is a power booster. When we decided to go multi-multi, I realized I only had one for the primary radio, so I placed a last minute order on Monday with TG Electronics for the N8XJK Super Booster, and Tim really came through for me with a just-in-time delivery. The power-hungry IC-7000 really appreciated it all weekend long.

I run a SSB stack and a CW stack of Hustler verticals on triple mag mounts which cover 40-10. After trying several combinations and getting lots of interference during multi-operations, I finally put a 15m resonator on the third mag-mount I normally use for 80m. After adding band-pass filters on both radios, we could run 20 CW and SSB on the 706 and 15 CW and SSB on the 7000 with full output and zero interference, so we said "good enough for this year," loaded up, and headed out to Liberal, KS, and our overnight stop. We made it in good time without running through storms or driving over a dead deer (like last year). At the hotel, I put on the antennas, programmed the CW and voice keyers, then called it a (relatively) early night.

Saturday

Saturday started with perfect weather, cool and sunny. Texas seemed unusually green thanks to a fair amount of rain the previous week. After a good breakfast, Ron and I headed south on a 45 minute drive through the Oklahoma panhandle to the Texas border. As start time rolled around, Ron worked K5GE on 40m in GUAD (our first of many) after several minutes of CQing. We worked a

number of Texas mobiles on 40m right at the start, but the action didn't really pick up until we switched to 20 and 15. DX conditions this year were really poor, but the 20m short skip to other Texas stations helped make up some of the lost mults.

Since the first two counties were short, I planned a 10 minute stop at the Ochiltree / Hansford county line. With Ron working CW at the stop, I went to the back and connected up the 7000. Murphy tried to help, but I finally got everything working just as we were scheduled to leave. I decided that keeping on schedule was more important and I didn't want to interrupt Ron to add the filter (at the moment a manual operation), so we postponed the second radio debut until the next stop and headed down the road.

After some nice runs, we arrived at the Dallam / Sherman county line. Dallam is the furthest northwest county in the Texas panhandle, so it always feels like a "rare" county when we arrive. After parking on the line and connecting the 20m filter, Ron had an immediate pileup. I headed to the back of the van and was on the air on 15m a few minutes later. Yes, it worked .. two simultaneous CW pileups, and zero interference! Standing at the back of the van with the sun out, I also realized I hadn't brought any sunscreen. With careful parking and sun shades to protect both computer screens (and me if I ducked down), that turned out not to be a problem. Unfortunately, the cattle trucks that went by were hard to ignore in more ways than one, and the flies seemed very interested in amateur radio!

The wind started to pick up which helped with the flies but raised some dust clouds. It was nothing close to a dust storm, but created low visibilities for short periods from time to time. Continuing along, we improvised a rest and gas stop, then caught I-40 east through Amarillo. I always wave at the freeway underpass where we got stuck a number years ago and continued operating the TQP from the back of a flatbed tow truck. It's a quick exit off to the Carson / Armstrong line and another great multi-multi run. This time we had 40 minutes and were still going strong when it was time to leave.

Our next line I knew was dicey. Three counties, Parmer, Castro, and Deaf Smith (how's that for a county name?) come together on some less than well-maintained covered wagon trails. The first attempt to get there was a non-starter. Getting stuck was a certainty. Five minutes later and coming at it from another angle, I stopped in front of a "dry" low spot and considered. If I could just make it across. OK, let's try. Luckily I didn't take a run at it because

the front wheels sunk in almost immediately and stopped with the rear wheels still on some kind of base. After rocking back and forth four or five times, we finally backed out. I should say I did, because Ron just kept pounding out the Qs! Lesson-learned. We settled for a two-county line stop instead and had another nice multi-multi run. Sometime during the run, a tumbleweed blew into the back of the van!

The rest of the day went smoothly, almost too smoothly given past experiences. The sun went down as we took an easy drive to our guest house, and we pulled into Paducah just as the QSO party ended. Our guest house, a converted funeral parlor, was empty except for us (we hoped). I spent awhile trying to make 40m work from the back with no success. Remind me to never again leave my antenna analyzer at home. After another few minutes combining and reloading logs, we ended a very satisfying day with 1424 contacts.

Sunday

Sunday morning was partly cloudy and a perfect morning temperature. There's a "local" restaurant next door which filled us up, then off we went with a quick stop at the gas station to try finding a clip which had come off our sunscreen. No luck and I also managed to lose another sunscreen and break a third one (don't ask!). Both the missing sunscreen and the missing clip turned up in the van during cleanup back in Kansas, debunking the rumors of a tag-along ghost from the guest house.

As usual, Sunday activity started out good and proceeded towards fantastic. Ron and I had been looking forward to the four-county line stop since we started. We had multi-multi working great, so we just had to get there. We both remember from last year (and have on video), the stop as being out in the middle of nowhere with nothing around. As we approached from the east, we started seeing wind turbines, and as we got to the actual line, we saw big power lines and a power substation just a stone's throw away. That's called a year of progress, I guess. With great fears of power line noise, we set up for multi-multi and gave it a try. Surprisingly, no noise on either 20 or 15, but a late QSY to 40 was a no-go.

And was the wait worth it? Yup :-). You all were amazing as you helped us work through the two pileups. I worked 15m CW from the back. It slowed down first, so I went to phone. Once Ron finished 20m CW, we switched places and I worked 20 SSB from the front and Ron got to experience SSB from the back! Since we were

logging with two unconnected computers and we'd run through two of the four counties already, I didn't have an easy way from the back to check which counties you needed. Besides frequency control on the way in, my solution was to give exchanges to everyone for all four counties. We ended up with 90 dupes, but at least that way no one missed a county. I'm sure not everyone logged the unneeded counties, but everyone at least acknowledged them. There's nothing more fun for me in ham radio than working you all from a four-county line in a great QSO party!

And therein lies the problem. The pileup went on and on and we kept delaying our start to Lipscomb, our last county in which we were the only operators. My GPS said 45 minute to Lipscomb and our last contact from the line was at 1912. I drove the Astro (with over 292,000 miles on it), pretty hard over the great Texas roads to try and make at least a few contacts from there. Several towns slowed us down. We worked mostly phone while driving along and told everyone we'd work LIPS on 20m CW. The race to LIPS ended at 1956 with an instant pileup. Ron had the honors as we both dug out calls, and he worked 12 contacts before the closing bell. Sorry we didn't get there sooner. On the four and a half hour drive home, Ron and I brainstormed some route tweaks which should help for next year. Try and keep us away!

Stats

2014: We operated 17.3 hours, 2572 Qs, 481 unique calls, 90 dupes, 1280 miles.

2013: We operated 17.0 hours, 1955 Qs, 421 unique calls, 12 dupes, 1375 miles.

2012: We operated 17.7 hours, 2270 Qs, 417 unique calls, 32 dupes, 1423 miles.

Saturday (495 miles during the QSO party)
ops

Texas mobiles worked (17) - some just traveling along:

15: NM5G

07: N4CD

06: WB5HJV

05: KK5LO

03: W5CT NW5Q NA5F

02: KE5LQ NO5W NS5J

01: AD5KA KB5KEW KS5A W2OZ WB0TEV WC5D

W0BH Award Winners - First Place -- Very Honorable Mention

Most overall Qs ---- NT2A/63 ----- N6MU/54 ---- N4PN/51
Most CW Qs ----- N6MU/54 ----- NT2A/51 ---- N4PN/35
Most PH Qs ----- N4PN K3TW N5MLP each 16
Most counties ----- N6MU/31 ----- NT2A/31 ---- N4PN/27

Afterwards

Special thanks to Chuck/NO5W and Keith/NM5G for coordinating the TQP. Thanks to NARS for sponsoring the event and thank you all for once again making the TQP one of our very favorite operating events. See you next year!

73, Bob/w0bh and Ron/ad0dx

WN4AFP

My first TXQP entry! Thanks to all the mobiles... K5YAA, N5NA, NO5W, W3DYA and N4CD. Limited antennas on high bands and 40m in the evening was filled with RTTY. Excellent activity from TX. Pileups for every mobile... Enjoyed it! 73's
Dave WN4AFP

N6MU 207 counties 486 cw qsos

Best TQP score ever! Score includes 22000 mobile bonus points.

Chasing a dozen CW mobiles thundering across the plains is a challenge that I look forward to every year. I worked five of them 50 or more times. Top mobile for me was K5YAA with 55 Qs followed by W0BH/NO5W(54), N5NA(52), W3DYA(50), W5CT(38), N5DO(19), WC5D(16), K5GQ/NS5J(14), N4CD(8) and KS5A(7).

10 was open a lot both days. Thanks to those who moved for me. Kudos to all the

TX participants for keeping this one of my favorite Parties. 73...

John, N6MU TS-570 & 5BTV

KI0I (MO) 304 cw 166 mults

Great Texas qso party. If I were another state further away the score would be much larger. I added my 17000pt bonus for mobile contacts. 20m was Just weird Sat., like there was a propagation hole in the middle to the west of state. Many mobiles were just a whisper of a signal but a few blasted in. Then Sun. morning the tables turned and mobiles barely heard the day before were loud and the ones loud Sat. had disappeared! WOW condx can sure change fast. As always the mobile ops make the difference between a good time and a great time! K5YAA ,W5CT AND NO5W were hammering out Q's like CW machines. Great job by all who took to the road .

Plenty of Home Based ops too, thanks to all you who stayed with it calling those cq's when the picking was slim.

Well that's thanks to everyone except the contest organizers ,don't want to leave them out so a BIG TEXAS THANK YOU also!

I'll be back next year for sure,one of the best contests around.

73 Mark KI0I

K5LH – fixed McLennan TX 466 cw qso

Lowest score in several years. Conditions favored out-of-state competitors as in-state mobiles were drawn to 20, 15 and 10 meters to satisfy demand for multipliers. Activity on 40 and 80 meters seemed low and intermittent compared to previous years, even though conditions were not bad. Mobiles working mixed mode left many CW listeners stranded who hoped to pick up needed counties on 40 meters. Mobiles most often worked were N5NA (26 counties), W5CT (22), NO5W (16), K5YAA (15), W0BH (12), WC5D (9), N5DO, (7), N4CD (7), and NS5J (6).

Overall this was fun, even though more fixed station from TX, the US and DX could and should have participated. Still, thanks for all the QSOs.

N4PN – GA 335 w 331 ssb 213 mults

OW! It will be really tough for any state QSO party to top this one..
Lots of great ops and mobiles everywhere...
Nice to make a lot more Q's on 15m and even a few on 10m that were not expected..

The mobiles breakdown as follows: Totals are Q's/Counties
W0BH-51/26; K5YAA-36/26; NO5W-34/27; W5CT-33/28; N5NA-31/25
W3DYA-21/19; WB0TEV-15/12; N5DO-14/12; NM5G-13/11; WC5D-12/8
KE5LQ-11/11; K5GQ-10/10; K5ES-9/9; KK5LO-8/8; N4CD-6/6; K5FRS-5/5
KS5A-5/5; NS5J-5/4; KC5LQA-5/4; WB5HJV-4/4; K5LOL-3/3..
Several with 2/2

Thanks to the fixed stations - lots of big signals..

Hats off to Chuck, NO5W, and others for putting on a great show!!

73, Paul, N4PN

WA6KHK – fixed – CA 413 cw 61 ssb 200 mults

My amp blew (big pop!) with about 3 hours left so that slowed down my pace. I managed to get county #200 with about 11 minutes left (thanks NO5W/M)! A lot of great rovers and fixed stations in Texas this year. As usual, they gave it their all. That's why this is such a successful QSO party every year!!

W1END - fixed – NH - 181 cw 113 mults

Did much better than last year; conditions must have been good. I checked 10-meters somewhat often and finally found AJ4F and AE5GT on Sunday afternoon. Their signals were moderately strong and the noise level was low. Worked a few on 40-meters below the RTTY stations on Saturday evening until the band became grungy (is that a word?) around 0100UT. Both days had fairly good conditions for me.

As usual the mobiles put on an outstanding performance. K5YAA almost always has a great signal here in NH. The others are usually good except during the

early afternoon when most are just around the noise level. I never heard W3DYA but reading the posts revealed he was quite active.

Thanks to everyone - the organizers and participants.

FTdx5000 (175w) and Butternut vertical.

Eldon – W1END

KN4Y – Fixed FL 235 145 mults

A great Saturday on CW, Sunday marginal, the nine mobiles on CW kept the VFO moving. With the 85 mph speed limit the counties came fast and furious. A wee-wee break cost you 2 counties, a coffee break three counties, a YL or OM interruption an unknown number. QSO party definitely on next years calendar.

K4BAI – fixed – GA 253 cw 349 ssb 191 mults

Mobiles did a fantastic job. Started the weekend needing 10 counties in TX all time and worked five of them thanks to mobiles W5CT, W0BH, N5NA, W5CT, and N5DO. Still need Dallam, Hardeman, Marion, Sherman, and Sterling. 10M never seemed to open to TX although N3BB moved me there successfully. 80M had very little activity on CW and none that I could find on phone, so didn't check 160M. 40M was OK for the first hour each day, but we were too far away after than until late afternoon. 20M was OK most of the time with the skip seldom being too long for East TX stations. Most of the QSOs on 15 were in West TX and east TX was skipping over us for most of the weekend on that band. Congrats to N4PN for a terrific job. I am getting accustomed to being the #2 to Paul. Thanks to the sponsors and to TX hams for all the QSOs.

73, John, K4BAI.

SP9LJD -fixed – Poland - 168 cw -60 ssb - 124 mults

First time in TQP but we had very poor propagation on 20m which is usually our main band. I can't get through to K5GQ and N4CD any time on Sat on 20m I tried several times but they don't copy me at all. So I thought Sun will be better

was even worse hi. So my 6 el. mono @120ft were to small pistols for TX guys hi.

Finally on 15m was a bit better signals at s 3 or 4 but without noise and works for me pretty good. The goal was 200 county but finally collected only 124. I think OM2VL has much more success than me. But that was challenge to get as much as possible QSO's with K5YAA/m. I was called him Sat in SHELL for about 20 min much more than any other DX station in my HAM's life. Thank you for all info very useful from the TQP website.

I would like to thank you mobiles:

K5YAA 52/30

W0BH 24/17

w3DYA 15/15

N5NA 14/14

NO5W 14/14

WC5D 12/12

WB0TEV 12/10

NS5J 7/7

40m was totally occupied by RTTY so was no chance for CW QSO.
Thank you very much for all other QSO from the fixed station.

OM2VL 241 cw 74 ssb 167 counties

2nd time on TX QP. The target was made as many as possible missed counties. I have confirmed 199 (99% of them I worked in last year QP).

After first hours it seemed very hard job ...

On 20m very weak signals and it was hard job to break the USA wall. So many times I called mobiles 10 and sometimes more minutes and many times when I break the pileup the mobile began his new county or QSY to other band (I missed 10-15 counties because of this). Sometimes I was lucky and caught them with QSY on 15m. On this band I usually had no problem to made QSO.

Good condition - I tried many times CQ on SSB and had nice USA pile, but unfortunately only sometimes found station from TX.

On Sunday the condx were similar to those on Saturday. 10m was also open for me and I made QSO at 16:46Z with N5JB with excellent signal. I tried to move mobiles, but I could not hear any of them on 10m. Also try SSB and had pileup, but nobody from TX.

I worked my 55 needed counties down to 31!! so still need 24 - I must take part in TXQP also next year :)

Thank you very much for the many QSO's, especially for mobile stations to gave me so many QSO's and new counties!

K5YAA/M 49/28 (QSO/CTY)

W0BH/M 31/23

W5CT/M 28/25

NO5W/M 27/23

W3DYA/M 21/15

WB0TEV/M 21/18

N5NA/M 17/17

WC5D/M 14/10

NS5J/M 9/7

AA9JJ/M 7/7

N9QPQ/M 7/7

K5GQ/M 7/7

N5DO/M 5/5

KS5A/M 3/3

K5ES/M 2/2

N4CD/M 2/2

73 Laci

N1LN – fixed – NC 275 cw 375 ssb

The Texas QSO Party always provides a good time. I always enjoyed operating from in Texas and out of Texas operating has also been fun. This year the fun was a bit different. A new ham friend of mine, Tucker KK4UNZ, has never operated Multi-2 so, even though Multi-Op is not a typical class for out of state entries, we thought it would be good fun and offer an opportunity for Tucker to get used to my station and multi-op contesting. Also, knowing that we were not really in competition it gave us the opportunity for some no pressure training.

We would both like to thank the mobile stations for their hard charging attacks on so many counties. When the contest ended we had racked up a total of 32 five county mobile bonuses totaling 16,000 additional points. Below is the list of the top 10 mobiles and the Q counts.

W0BH 37
K5YAA 28
W5CT 25
NO5W 22
N5NA 22
W3DYA 14
KK5LO 11
WC5D 10
NS5J 10
N5DO 9

We would like to thank the QSO party sponsors and all the Texas stations for a very high level of activity.

73,
Tucker and Bruce
KK5UNZ NILN

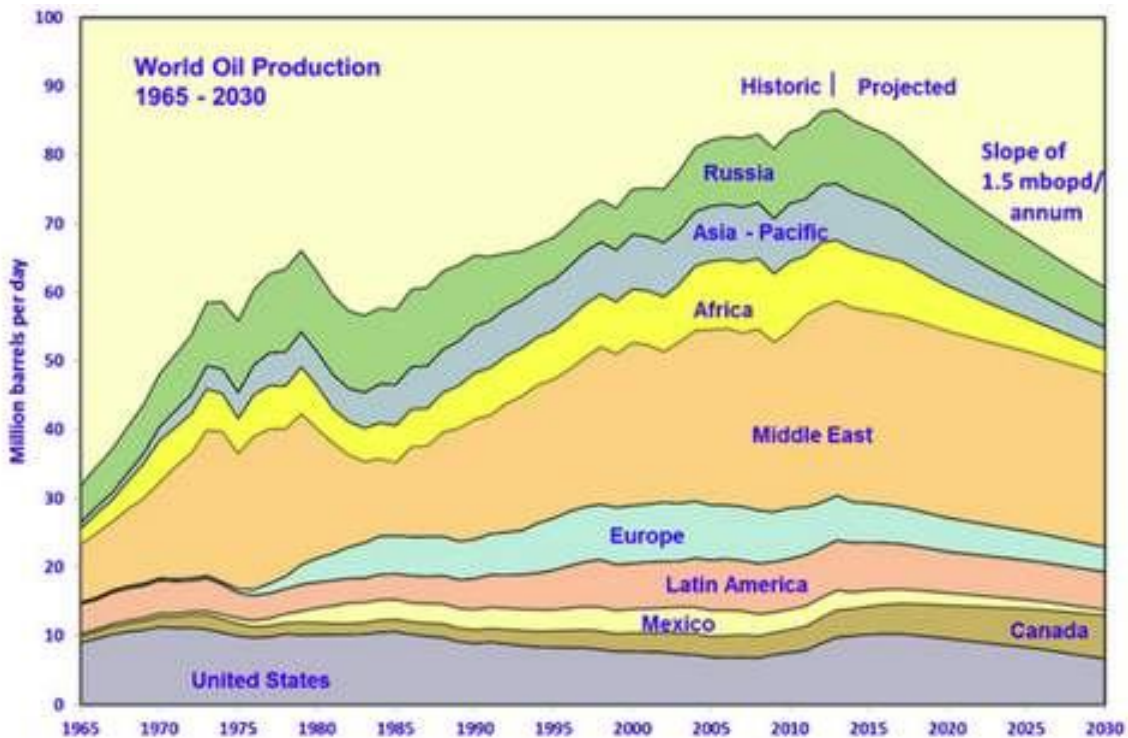
Peak Oil Update

It's been a few months since the last peak oil update. We're bouncing along and oil output and prices are steady for the last year or two. The good news for the US is the increasing oil from the oil shales, using fracking. The not so good news is that the predictions are, by various sources including the government, likely to peak in 2018 and then slowly decline.

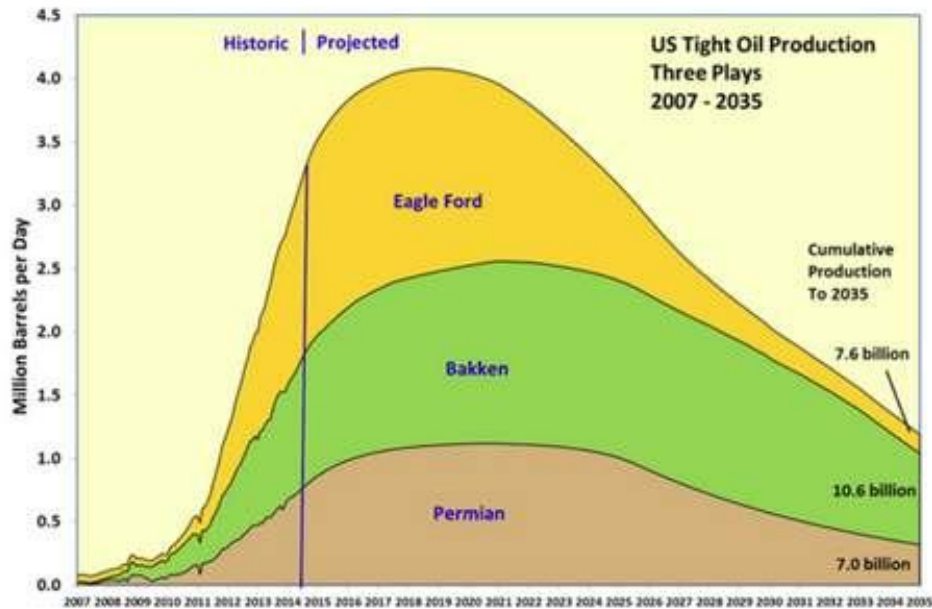
You'll recall that the conventional fields in the world are dropping by 3-5 million barrels a year due to depletion. That means that each year, the world has to find a new source of 3 million barrels just to keep even. Or more. So far, we've been lucky and have barely kept up.

David Archibald, author of the book *Twilight of Abundance*, reviewed last month, has put out two graphs of predictions. Here they are:

This is world output. Note that the US is only a tiny fraction of the oil produced in the world. You see the line at the right top separating 'historic' production from 'projected' production.



This is the output of the US oil shale plays:



You can see it peaks at about 4 to 4.2 m bbl/day production, then declines out to 2040.

The good news is that, at least for a while, the US will be approaching 'energy independence' – for two reasons. The oil sands will produce enough to reduce our imports to near zero. Second...over the last 20 years, the US demand for oil has dramatically dropped – due to more efficient cars, and demand destruction as the price of oil headed to \$100.

Will oil once again climb to \$150? Most folks now think that the world cannot afford to pay any more than \$115 or so for a barrel of oil. Above that, economies will slide into recession or depression. The last time oil hit \$147, the result was a giant decline down to \$30/bbl as economies collapsed. But will happen when oil starts to run short in the not too distant future?

Good question.

Right now, oil prices are dropping as economies around the world are stalling and many teetering on recession or depression. Much of Europe is having a problem with budgets and heavy, heavy debt loads. If you keep borrowing like a drunk sailor, at some point, it catches up to you. China has slowed down dramatically as well. OPEC is in the position of needing all the revenue they can get to keep their 'social programs' going, to buy peace internally, and is not cutting back despite 15% lower oil prices. Eventually, they might cut back, forcing prices up again. We'll see.

Keep in mind that half the world uses at least 25% of their income to buy food, and over 1 billion spend half their income to buy daily food to keep them alive. As the price of oil rises, so do the price of food stocks. It costs money to do the mechanized farming of today, transport the goods by vehicles, process it in factories, and get it to customers. Rising fuel costs ripple right down the food chain. If food prices double, a good portion of the world will simply starve to death.

I read through the book this month. Lots of 'food for thought' as he lays out what might be a very bumpy ride through the future.

Remember, nearly every war ever fought has been over 'resources'. Oil, coal, gold, fish, water, minerals.

On the Road with N4CD - II

The Belton Hamfest (swapmeet) comes up twice a year. The weather was great for a trip on Friday down to Bell County about 170 miles down the road from the home in Collin County – straight down I-35. The weather had not been too great on the day before, Thursday with 70 mph winds and golf ball size hail along the I-35 corridor from Denton County down to Austin. Over 850,000 customers were without power and some won't be back on line for a week. Some areas had major damage but the N4CD QTH escaped with no problems. That weather front brought in some cooler temps finally to break the mid 90s spell.

I packed up the car with a few goodies to sell. This is a big swap meet and nothing else goes on for this 'hamfest'. No programs, no presentations, nothing. It's all swap meet and of course, running into other hams who meet in various motels on Friday night for a get together, sort of like Dayton, but a lot lot smaller, or on Saturday during the big flea market/indoor sales. Occasionally they'll have VE tests for aspiring hams.

It's a few hours down the road, and now that I have started over, I'd be sure to make a contact from each county as I drove through them. I normally do anyway, but now I was keeping track once again of 'new' transmitted counties. I'm not sure why, since the probability of getting all 3077 done again for 'the third time' is pretty small, but it is interesting to do and not too much work. I use a coloring book for each time.

Nothing much to report. Lots of construction is present on I-35, for at least 100 miles of

the 170 mile drive down there to the Super 8 motel in Temple TX. I checked in around 1pm and then headed over to the Bell County Exposition Center where the swap meet is held on Saturday. You can set up on the indoor tables for \$15 after 2 pm (includes an admission which is \$5) which is a good deal. I drove in, unloaded some stuff, and then drove out again and parked. I browsed the outdoor flea market of about 30 folks on Friday, wandered around inside – another 30 folks - , met half a dozen ham friends from different cities, but no county hunters. Hmmm. Sometimes K5AX will show up. Oh, wait, I did see KK5NA and wife – he was there selling a whole bunch of stuff. That was it. Most county hunters aren't pack rats. Some are.

After a couple hours, and setting up my small amount of books and other things on the table, I headed back to the Super 8 Motel (\$60 including tax). Right up the road is a brand new Golden Corral. It's not more than a few months old. I stopped for dinner there – you can get lots of salad (big plate) and lots of veggies – from pinto beans to green beans, brussel sprouts, corn, peas, mushrooms, onions – all the good stuff – plus of course, ham, steak, chicken, potatoes, all sorts of bread and not to forget, desserts. I indulged – well, skipped the bread and desserts. Good – but too much salt! They overdo everything with tons of salt. You can't win them all! Then it was back to the motel.

I set the alarm for 5:30 am. Breakfast doesn't officially start on Saturday until 6:30, but they had things out just before 6am. I had a waffle. Yum! Also ate a small apple and had a small orange juice. Then it was off to the hamfest before sunrise. Folks were wandering around the parking lot flea market at not long after 6am using flashlights. I had a small LED type one to use and you needed it. The sun isn't coming up till well after 7am this time of year. Didn't find anything to buy, or even anything of interest to take a picture. There were tons of Heathkits for sale. This was the year for Heathkits. Several estates of silent keys were up for sale and there must have been 30 or 40 pieces of Heath stuff in those estates. SB-100, SB-301, 401, SB200s, accessories. They weren't selling even at decent prices. One Collins pair for sale, and a few Drake transceivers, the usual Kenwood variety and some Yaesu thrown in. There was a nice Yaesu transverter – 6, 2, 432 – for just \$75 and it sat and sat. Most folks were not digging through the boxes under the tables. Not much was selling on Saturday it seems although folks went by with their arms full - must have found something they wanted – hi hi.

This is a morning hamfest. It's all over by noon, and often by 10am. It starts inside at 7am. If you aren't there early, you missed it. Saturday was cool, starting at 55 degrees in the morning – jacket weather and long pants. We expected to get up to about 80 for a high. Weather was not a factor his year – excellent weather. I suspect the average

age of the ham population is a factor. There was lots of gray hair and pot bellies, and not many young folks in their teens, 20s or 30s. The older folks are downsizing, and not adding to collections. Their reaction is like mine - "Oh, I had one of them when I was a novice"....but of course, they like their super duper solid state rig with all the bells and whistles – and have no need for that original rig, or the one they wished they could have afforded back then! Hi hi

After a few hours, I packed up and left. I sold a bunch of the 'heavy' stuff including a Swan 117 power supply, a Heathkit HP-23 power supply, a Hallicrafters HT-40 transmitter.....and one book out of the 7 I brought down there. I took one last sweep through the flea market but no regens to buy.....and nothing nifty either. It was time to go county hunting.

The usual route is about twice as long headed home – going west to Coryell, then Lampasas/Burnet line – before heading north again through Hamilton, where you can hit the Hamilton/Bosque line – then north again to Erath/Somervill line, the Hood/Johnson line, then into Parker, Tarrant and across the metroplex to home.

On this trip, there were lots of mobiles out running including AA9JJ, W0FP, NF0N, N8KIE, N0KV/N0DXE, KJ5PQ/N5UZW, W3ZUH, WA5POK on SSB. On CW, only W3ZUH, AB7RW, N9AC were busy. Just for the heck of it, I tried to make at least one contact per county on SSB on the way home. Hi hi. I worked a mobile as they were running their county. Didn't hear anyone on 17 ssb, but heard folks working the mobiles. I just went to 17m SSB one time to run a county.

On the cw bands, 17 was good, 14 pretty good, 30 pretty good, and 40m only so so. A few Europeans made it through. Starting at about 1700Z, the California QSO party started and I suspect lots of county hunters were off working those folks. Ten meters was in fine shape with loud signals. 15 and 20m were full of signals. With the Texas QSO Party the week before, many of the needs had been filled it.

I was home at 4:30 after a total of 450 miles, and had success transmitting from all the counties along the way. Saturday I did some self spotting that helped bring the QSO total up a bit. Without spots you can only have a half dozen in the lot. With a spot, it goes over 20 easily and up to 30 on CW. There are more folks on SSB so you might get 30-40 on a run if you hit rare counties, or you are a team, etc. Not to worry – I was going to the hamfest and came back the 'county hunter way'.

Atlas Shrugged, Part III

The third part of the series of movies, Atlas Shrugged, hit the theaters in early September. This is the final installment. It's a low budget film and you won't see lots of advertising for it. It may be gone off to DVD and cable channels by the time this newsletter gets out.

You'll recall from previous issues that Atlas Shrugged, by Ayn Rand, is a classic story about socialism. It takes place in the era of the railroads 80 years ago when they were the main mode of transportation for the country. Back then, in the story, the US government became like the government today of Venezuela. It took over industry after industry (hmmm....GM....banks....) to 'protect' society from the evils of capitalism and wealth. It was 'taking' by the government of whatever assets they wanted and 'needed' to run the government.

Slowly, the major heads of businesses slowly disappeared, along with the entire output of their facilities. The government imposed (just like Venezuela) higher and higher quotas, higher and higher taxes, more and more onerous 'regulation' that let the government loot the wealth of industry (hmm.....billion dollar fines against Google, Apple, Bank of America, and every other profit making entity right now). Naturally, things go downhill, and the spiral steepens. The 'producers' are taxed to death, their assets seized, while the 'moochers' demand more and more.

Finally, we find out where the titans of industry have gone. They've escaped to a hidden place that John Galt and others have founded. It's a place where their contributions are recognized, not confiscated. The rest of the US is spiraling down. There is a shortage of everything but hot air and lies out of Washington TC.

Meanwhile, when Dagny leaves the railroads (she is CEO) for 4 months after her plane crash, they literally collapse upon themselves as the government mismanages them. The end of society and the US government is not far off. She returns to try to keep the rail lines running, but discovers her brother, who took over when she was absent, has sold out and a government committee is deciding where trains will run, if they can run at all. Things are slowly grinding to a halt with no spare parts, materials to fix them, or

trained people to run things. When the last railroad bridge linking the east to the west collapses into the river – it is the end of the railroads and the nation.

If you find the in your local theater, go watch it. Might turn out to be a classic movie, too. Done with 'crowd sourcing', not Hollywood money,!

<http://www.atlsshruddedmovie.com/>

California QSO Party

The stations were on! Ten meters was wide open! The Europeans were loud on 15m and having a ball. 20M had a lot of shorter skip and wasn't all that great. There was at least one rover out – K6AQL – plus lots of 'county expeditions' and activations of counties by guest operators. It was another bonanza for 1x1 and 2x1 calls this year again, most of them good for the Natural Bingo award.

This one would be as good as Texas if they created another 190 counties in CA to chase! Hi hi. All of CA was on the air for the event.

K6M County Expedition – Modoc

It just doesn't get any better than this. The weather and the propagation were as good as can be hoped for. This was the 16th consecutive year the Central Oregon DX Club has operated from this site at the Timber Mountain fire lookout in the Modoc National Forest. This year we did it with a crew of only four operators for two transmitters.

Modoc County is very sparsely populated high desert country in the very northeast corner of California. More than once we have been the only activity here. We have been fortunate to have a very good relationship with the fire lookout personnel. This weekend is the opening of the deer hunting season and the presence of our campers, antennas and activity keeps the hunters at bay...

We left Bend Oregon at 0700 Friday morning and gathered at our favorite truck stop in LaPine to have breakfast and get everyone on board. Our very best phone operator, KK7YC, called in at the last minute to say he couldn't make it. So we have only four ops, not a good start. We made the 200 mile trip in about 3.5 hours and arrived at the lookout by 1400. Setup of the antennas proceeded without a hitch.

TH3 on a 45ft trailer tower,
TH3jr on a 30ft tip-up mast,
40m dipole at 40ft,
40m sloper to the south off the fire tower,
80m inverted V at 50ft on the fire tower
160m longwire to the south from the fire tower
400' terminated Beverage looking east.

One station was set up in a 27 ft motorhome's rear lounge area converted for radio: a 6 ft by 30 inch door as an operating table. The other is on a more modest table in a 40ft 5th wheel trailer.

We forgot the wireless router! Fortunately AE7IK was able to reconfigure the two laptop's wifi components so they could talk to each other directly, though he admitted they may never work normally again. After a little more work, both the K3/KPA500 phone station and the TS480/SB200 CW station were talking to N1MM and to each other. Yippee! Time for dinner and bed.

A word of thanks to the non-operators in our party: motorhome driver and 'radio groupie' Sterling WN7K, his wife Gretchen, and AA5TL's wife Jackie (KA5LZQ). They did a great job of cooking breakfasts and dinners. And to Charlie the springer spaniel who kept the area clear of chipmunks. They all make it a pleasure to sit in a chair for three hour operating shifts.

Things started off with a bang at 16Z with K4XU on CW and AE7IK on phone. We had a little give and take on the best operating category - not multi-two!, multi-multi or N1MM throws all kinds of fits. Though we started on 20m we were soon on 10m which was getting hotter as the sun came up. Wow! This was special. 10m hadn't been this open in a year. Europeans calling in as strong as the east coast and without the usual flutter of trans-polar path signals. It was only the strategic imperative to keep the per-band QSO count reasonably similar that drove us down to the lower bands. Rate Rate Rate, right?

There's a penalty to pay for operating a 40-year old TH3jr on 200 feet of coax. When I made the switch to 80m I too used to automated antenna switching -- forgot to use the coax switch and operated for 30 minutes using the tribander. The SB200 didn't care with at least 4 or 5 db of return loss. Signals were kinda weak. KF7WPK and I had the last night shift. We concluded that three hours of sleep would serve better than the under 20 Qs per hour we were making at 2:30AM local. We turned off the rigs, computers and generator and hit the sack.

At 6:30 Sunday morning Murphy came to visit: the phone computer won't boot, not even the BIOS. This one's toast. So AE7IK boots up his Linux LT and in short order somehow has both N1MM and Wifi talking to the CW LT. We are back in business!

It seemed very easy to keep the rate at about 75/hr on CW. Every so often a European would spot us and there'd be a spate of SP LZ YO OK OM DL followed by a pent-up brace of domestics. The HF propagation gods were shining on us. The low bands seemed to be quiet and well-behaved but the participation was down. People got worn out on the high bands and didn't have much energy left for LF?

In the end it was a great weekend. We were on the road by 4:15 and arrived back home about 9PM too tired to do anything. Man, this getting old thing is getting to me!

Thanks to all for the QSOs and your participation in CQP, the greatest single state QSO party in the land.

73,
Dick K4XU

K5YAA - fixed OK - 240 cw 260 ssb

Got CQed in my face a number of times on 10 meters - signals were watery yet the 6s were running the east with ease. Actually the high bands were in excellent condition and today (Sunday) I heard Europeans louder than I have in a long time on both 10 and 15. 20 was a ghost town this afternoon but I was finally able to squeeze out 500 Qs by S&Ping on 10 and 15. Being antenna

deficient (no 20 40 or 80) meter arrays right now I didn't get to 40 or 80 which should have been a slam dunk from Oklahoma. Fun anyway and a terrific amount of activity out of the state of California.

Thanks for the Qs 6 landers and to the organizers for their continued efforts. The web site of records and scores is a nice one.

73 - Jerry K5YAA

W1AW/6

ops KB0VVT KG0US KG0UT NF1R K2YY KZ2V ND2T AA6XV K6SF N6DB
W6LD N7MH

W1AW/6 operation from W6YX will be submitted as a checklog. Total CW Qs - 3439, total phone Qs – 3922.

We started the contest with 7 operators

Thanks to all our operators for participating and to our other club members who helped prepare the station and antennas so that we could run 7 high power operating positions.

73,
-Mike, N7MH

K6Z – County Expedition – Inyo CA

Operator(s): K6ZZ K6ZED W6PH KI6VC W1MD WA1Z N6WIN K1QX

Another very enjoyable CQP. Once again the K6Z Crew ventured into the Alabama Hills of Inyo County with the primary goal of having a good time with our Ham Radio friends. Success! This was our 10th Inyo County Expedition.

This year we brought out four AB-577 military surplus masts and set up four K3

stations with homebrew Yagis on 10M, 15M and 20M. We used a 40-2CD on 40M and wires on 80M and 160M. Amplifiers consisted of two KPA-500's, one AL-1200 and one LK-500ZB. N1MM was used for logging. For the most part everything worked as planned. We did need to fix a cold solder joint in the AL-1200 during the contest.

One of our regular crew members (K6VR) couldn't make it this year so my newly licensed XYL Jennifer (K6ZED) joined us. This was her first semi-serious contest effort and she did well racking up 555 QSO's on 40M SSB. She's hooked! For 35 years she had no interest in Ham Radio and then decided to get her license to surprise me for my birthday last year. Since then she has gotten her Extra, earned DXCC and gotten interested in Contesting. Go figure.

Thanks for all the QSO's and thanks to the NCCC for sponsoring the CQP.

73, Bob K6ZZ for the K6Z Crew

N4PN – fixed – GA 355 cw 658 ssb qso 58 mults – sweep!

Another fun CAQP in the books...Started out to work this one LP and all was well on 10 and 15m, but going to 20m with LP was not to be..couldn't get anything going...only S&P...so, on with the amp...

Great to see so many friends who have I known for years...this is what makes this one so great...

Goal was to break 1000 Q's, but never would have happened with LP...just barely made it with HP...finished with 1013..

Probably shortest time to the sweep at 10 hours 39 minutes...

Thanks to all....and hopefully see you next year!!

73, Paul

New Jersey QSO Party

NJ was 'on the air' but it was scarce on 20M. There was more activity, as usual, on the lower bands. Didn't hear any mobiles out. One mobile could cover the entire state almost. Two could easily do it.

From the 3830 contest reflector:

NA2JM – fixed – NJ - 101 cw qso

K2ZC – fixed – Passaic NJ - 117 cw

WN4AFP 17 cw 20 ssb 13 counties

This was my first NJQP! I gave my full contest Saturday to the NJQP and had a ball with it... Thanks to many of the stations who were willing to QSY to other modes and bands for qsos... I could only work Saturday, so did S&P on 20m and 40m. I also did a few hours of "CQ New Jersey" running. I lost my Southern accent after a few Q's in this race... Special thank you to K2AA/R for his rover. We could use a few mobiles out there next year... Enjoyed my first NJQP!

This score includes contact with bonus station K2TD.

73's Dave WN4AFP

KN4Y – fixed – FL 7 cw

Heard a few, worked as many.

WB2P – fixed SNJ 253 ssb

Nebraska Rare Counties Event

October 11 was selected to be 'rare NE' county day!

Mike, NF0N, headed out for the day putting out over a dozen 'rare' NE counties. More before and after the event were run too!

NE0QP was on SSB for additional counties.

PA QSO PARTY

Oct 11-12

We had a 'party' for sure. Dozens and dozens of PA stations were on for the event including a bunch of mobiles. Conditions on 15m from TX was good with many mobiles heard and strong fixed stations running up totals to the high hundreds of contacts..

From here, it seems that 10M did not open and didn't hear DX calling into PA. Heard and worked 5W1DX, WH7M (Hawaii County) and some other Pacific area DX on 10m...but no PA folks. However, the DX was having a ball on 15M into PA.

This is a two day affair. Saturday had better conditions – Sunday things were not so good on 15M but mobiles were still there and out running. Between SSB and CW, likely most of the counties were on the air. Activity shifted to 80m in the evening with lots of activity spotted by N2OCW and others.

Some of the PA fixed stations made over 1500 contacts, like AA3B with over 500 on cw and 1000 on SSB.

From the 3830 reflector:

N2CU mobile

Dollars for gas: 70

Miles on car: 450

Hours of sleep: 5

Two days of radio fun: Priceless

The score is a little less than last year. I operated fewer counties in an effort to provide more high band QSOs for out-of-staters, but I did leave a lot of QSOs on the table by not trying SSB on 20m (and 15m) until nearly the end. Tried 10m off and on, but never heard any activity.

QSO leaders were OM2VL 15 (including two 80m CW QSOs), K5LH 12, AA3B and K0RI 11, and many others in the 5-9 range. Thank you to all the stations who followed me from county to county and made this weekend most enjoyable.

Score includes bonus points for operating from 9 counties and making the minimum required QSOs in each, and 28 QSOs with the W3TDF bonus stations. If you missed Forest or Warren county, don't blame me; I had 382 QSOs from those two counties alone!

Elecraft K3/100, screwdriver antenna, N1MM (legacy version).

73,

Tom N2CU

N3VZ multi op mobile 532 cw 210 ssb (all 40 and 80m)

First time mobile, had a blast

W3USA (K8MR and W3JL) - multi op mobile – 319 cw 27 ssb

PaQP is almost always a nice drive to see the fall colors, and this year was a beautiful day for that, although the leaves have just started to change. And a day to play radio as well. To get maximum exposure to the phone crowd in PAQP we also stopped to operate with the 33 Foot HamStick in four of the more rare counties. Since the PAQP rules don't allow rovers to make QSOs while moving, we operated as W3USA while mobile and as K8MR when parked.

I skipped the full mobile setup with the four band Hustler system, and just used two HamSticks while mobile. So no 15 or 10 meters. I also saved most of the SSB operating while stopped.

All in all a pretty typical PAQP - lots of in state activity, not so much from out of state. But still a fun trip for this Pennsylvania native.

On Saturday I'll be roving around the Finger Lakes during the daylight hours in the New York QSO Party. Hope to work lots of you then!

73 - Jim K8MR

It also seems they operated as K8MR mobile in 4 counties – 5 cw and 295 ssb QSO

K3JWI Multi OP Expedition to Huntingdon cw 526 252 ssb

This was our second annual mini-expedition to Huntingdon County. Again we operated field-day style (wires in the woods) from K3JWI's family cabin located near Greenwood Furnace State Park. We used a TS-590s/G5RV, a K3/40m EDZ and an inverted-L with one raised radial for 160M. We had two laptops networked with N1MM software. Conditions on all bands were very good and the 60 QSO's on 160m were a pleasant surprise considering the very simple antenna. Thanks to everyone for the QSO's.

73, from the K3JWI team (K3JWI, K4VIG, WB4ZBI, W4NZ)

W3NO Multi OP Mobile – with AD8J cw 797, 610 ssb QSO

We covered 19 of the 21 counties we wanted to. We were falling behind schedule

so we dropped two counties which we knew were being well covered. We were having trouble getting anything going on 80 CW on Saturday night so we headed to the hotel early for additional sleep. That helped us on Sunday but may have been a mistake as I now see we had a shot at the multi-mobile record. If we had stuck it out and increased the number of CW vrs SSB contacts on Sunday, we probably would have done it.

The rig was a TS-480 driving a SB-220. Power was supplied by a 3.6 KW generator mounted on a trailer hitch platform. Antennas were Hamsticks mounted on a custom roof mag mount. Yes, we know that Hamsticks aren't designed for that kind of power and we do attract some attention with the RF arcing from the tip of the active stick at night. We normally just ran with the 40 and 20 sticks but could have added the 10 or 15 if required. However, with the rate we were trying to maintain, switching to a lower rate on 10 or 15 would not have made sense. The vehicle was a 2008 Honda Accord. Thanks to the bonus stations for calling us 7 times as we didn't want to take the time for searching and having to break pileups. Demerits to the fixed stations that operated in the mobile window. There were times that we stayed on CW as we couldn't find a clear frequency, in the SSB mobile window, to call CQ. It helped our score but may have kept some SSB only stations from working us in some counties. . Please look for us in NYQP as W2M/M with the same setup.

KA3EEO Multi Op Portable with N3RN – Susquehanna, PA 264 cw 567 ssb

Some AC problems at the campground, so operated the first 2 hours on a battery. Lost all AC at 9PM so we shut down.

But still our best score from Susquehanna county, and our first county sweep. The 80 meter center fed Zepp worked well on 80 and 40, but need something better on 20.

N4PN – fixed – GA – 205 cw – 355 ssb - 'sweep' of all 67

Great tribute to Ray, W3TDF, with 10 stations signing his call in 10 different counties...

Had to be out of town on Saturday...got back home and found lots of activity...missing many counties when stopped on Saturday night, but Sunday was busy with many fixed stations filling in the blanks... Then ole pal, Jim, K8MR (W3USA), showed up in western PA...giving LAW and the last one CMB in the afternoon...

.
Thanks to all,
73, Paul, N4PN

K3PP- fixed – Carbon - 238 cw753 ssb

I had high hopes to break my county record this year. I had a great weekend, but not quite great enough to break the record! I guess I didn't push hard enough with my main competitor Goody occupied with the W3TDF/CAR crew! CW wins in this game and I just didn't do enough CW.

I was afraid I would miss the 67-county sweep, but then K3NQT in BED called in during a run I had on 40m CW, giving me the last county!

KN4Y – fixed – FL 134 cw 47 mults

Do away with the serial number, it serves no useful purpose and more stations would participate, especially mobiles, as it is a great QSO party. I operated CW and was kept busy as 15, 20 and 40-meters were open. Was happy to work the bonus station on CW.

KD8MQ – rover – multi-op - PA – 79 cw 475 ssb (with WI8T)

via email:

I want to thank you for the e-mail you sent me last year admonishing me to do better on 20 meters during the PAQP. If not for that, who knows what anemic 20 meter antenna I'd have tried this year.

We did a 20 meter ground plane this year, which was worlds better than the ground mounted vertical that was so pathetic last year. We still only managed 16 CW Q's on 20 (you were one of them). I know I need to work a lot harder on my CW skills. There's still lots of room for improvement.

Phone was much better at 116 Qs.

73,

John, KD8MQ

56

OM2VL – fixed – DX 193 cw 109 ssb qso

My first PA QP. (I hunted also AZ stations in AZ QP, maybe I missed some from PA)

The condx were very good, especially on 80m and 10m. I spent lot of time on SSB and had nice pileups from the USA and fortunately also was called from PA :)
I HRD on 80m SSB W3TDF and I called him long time, but unfortunately he don't copy me.

Many times I checked 10m CW, but I made only 4 QSO.

Thank you very much for the QSO's!

Most QSO's with:

Mobile:

W3TDF 21/7

N2CU 15/8

W3NO 12/9

K3ONW 10/6

W3CG 8/8

N3VZ 7/7

KN4SK 4/4

K8MR 2/2

W3USA 2/2

73, Laci OM2VL

AB7RW Trip Report

Back in January 2014, Barbara and I talked about attending the 40 et 8 Nationale Convention that would be held in September in Virginia Beach, VA. The 40 et 8 is the Honor Society of American Veterans. As I was the Correspondant (Secretary) for the state of Washington, I was compelled to attend. When the registration form was published, we talked about driving to Virginia. My last trip across the country was 27 years ago when we moved from Chesapeake, VA to Vancouver, Washington. My 12 year old son and I made the trip.

We decided this would be a good trip to drive. Then we could visit my sister in North Carolina and my brother in New Jersey. Picking a route using the Atlas was not an easy task, so I purchased some Gazetteers. These proved to be a real asset.

Selecting the route to Virginia Beach was almost too easy, nearly a straight line across the United States, or so it appeared. When we got into Kentucky I began to realize why everyone needs Kentucky counties. The roads are narrow, very curvy, and up and down. We took a wrong turn a couple of times but did not notice it until miles latter. We spent a lot of time getting back on track. Our Kentucky destination was Middlesboro for the night. The evening disappeared and we were in the dark, hungry and needed a bathroom. We stopped at a cafe in Whitely City. The manager took notice that we were not locals, so she joined in a conversation with us.

We continued on our way, and now it was extremely dark and Barbara was driving very carefully. The locals could not understand anyone driving slowly. There could have been a deer over the next bump in the road or around the next 90 degree curve. We finally make it to the hotel at 2310. And up the next morning at 0530 to start the day.

The weather at Va. Beach was quite chilly, 51-55 degrees with a 60 MPH wind. The ocean was churned up. Our last day there was the best. Sunday 28 September we headed for New Jersey. The trip across the Chesapeake Bay Bridge had a toll of \$13.00, not much more than it was when we lived there. We stopped at the first tunnel and walked to the end of the fishing pier, then into the gift shop, chatted with salesgirls, one has relatives out here in Oregon. Away we went to the north. All went well making excellent time on the route 1 expressway in NJ. At the end of the expressway, the traffic was

waiting for us. From the end of the expressway to exit 8 on the New Jersey Turnpike was a lifetime. We found out later that the NASCAR race was over and this caused the major traffic problem. All together, it took us eleven hours for a little over 300 miles.

On our way out of NJ, I wanted to get on Interstate 80 to cross Pennsylvania. I picked some neat roads, found us going in a circle because of the crazy on and off ramps. Then the radio quit. With the help of Hollis, KC3X, I checked the fuses and they all looked good. The next morning I thought the fuses look good but maybe I should pull them out of the protector. Then the fuse at the battery fell apart. This was a result of the battery having a full plastic cover, and when I have work on the car, the repairmen take the cover off and are not careful putting it back on, so it was putting stress on the cable, pushing it away from the fuse protector, thus the loss of power.

It was a wonderful trip. We may drive to Norfolk in 2016 to attend the Naval Cryptologic Veterans reunion.

The trip totals: 7425 miles, 3748 contacts, transmitted from 214 counties which brings my transmitted counties up to 842, while my total mobile to mobile contacts increased to 1485 counties.

Of interest: We were paying \$3.85.9 per gallon of gas on the west coast. On the east coast, gas was as low as \$2.95.9 per gallon.

Phil, AB7RW

Arizona QSO Party

Oct 11-12

The annual Arizona QSO party attracted a few folks, but participation is low. There were four or five 'County Expeditions' to counties. Most of the ops wait for the 7QP event and get on or go out on expeditions then. From TX, I only caught a dozen

stations – and missed a good part of the state, county wise – at least on CW. A few more were available on SSB, but there were few SSB spots for activity. No propagation on 10M heard into AZ – and for me, one or two on 15M but it was 'too long' for most. Some years we catch some 'E' type propagation on 10 or 15, but NIL this time on 10m.

Some of those AZ stations have BIG antenna farms.

From the 3830 reflector:

W7A county Expedition to Greenlee - 56 ssb qso (W7PP , opr)

From Hannagans Meadow AZ. Great weekend in the mountains... 33 degrees at night!

W1END – fixed NH – 19 cw 11 mults

be a one-day party. Most of the signals were pretty good. Nothing on 10M. FTdx5000 (150w) and Butternut vertical.

Eldon - W1END

OM2VL - fixed – DX 35 cw 34 ssb

2nd time in AZ QP. I also took part in PA QP, maybe (sure) I missed some stations when I made PA QSO's. No luck with W7SVD, W7FSL, N7AM, NJ0W, W7A (I missed their counties.)

Great opening on 10m, but unfortunately only few stations from Arizona.

Worked counties:

APH (1 QSO),CNO (9),LPZ (2),MCP (19),MHV (1),PMA (15),PNL (4),YMA (6),YVP (3).

Thank you very much for the QSO's!

73 Laci OM2VL

KJ4LTA – fixed – AL 10 cw 20 ssb

On the Trail of Regens

This month a few things went by on Ebay in the way of regenerative receivers from the way back days. First up was a homebrew HF/VHF receiver – looks like about 1940 or so construction time frame from the ideas in this set.

The ad said 'built by an old Elmer' but the paperwork, schematic and other information had been lost. It was five bands – four SW and a VHF position that took plug in coils for likely 6/5 meters, 2 meters and 220 MHz using a super regen set up for VHF.

Here's some pics of it. It seems to be nicely built, but the dial was never calibrated, which leads one to wonder if it really ever worked. The price, including shipping, was in the \$100 area - so I passed on this. It sort of looks like a RACO clone – a popular design for short wave listening back in the day, sold out of job shops in Radio Row in the 1939/40 timeframe.

The HF coils were under the chassis – maybe – no picture of them shown.



Internal view



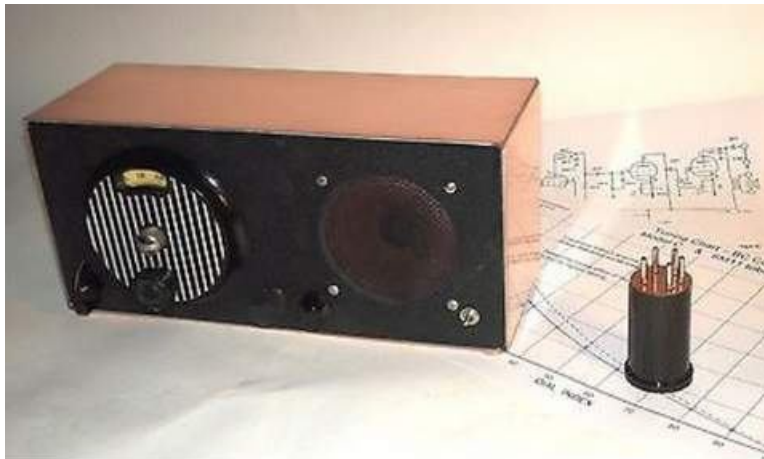
The second item was offered by as seller. He built a 'one tube' Compactron set, then wrote an article for Antique Radio Classified magazine. Now the 'prototype' one and only unit is up for sale. The Compactron tubes were a last ditch effort to keep tubes in production during the 1960s. They contained 3 or 4 separate 'tubes' and were popular in

color TV applications that needed many tubes for the functions of the color TV set. One could reduce the 'tube count' and sockets by using them. They really didn't catch on with hams in a big way.

Popular Electronics had an article building a similar receiver back in the days.

The seller wrote:

I'm listing my last prototype of a Compactron receiver I built for a magazine article. This one is built into a nice copperclad fiberglass cabinet – measures just 11 by 5 by 4 inches. It needs only a 10 foot wire antenna to bring in local stations. Oldtime vernier dial, controls include fine tune, regeneration, volume, power toggle switch. Three-inch PM speaker. The tube is a 6M11. Tuning chart and schematic included. Includes tuning coil for AM broadcast band – and it runs on 120 volts AC. I'll throw in a new form so you can wind a shortwave coil. Get hold of "Antique Radio Classified" for March 2000 to read about three interesting one-tube designs. " Sold for \$107 on Ebay.





A few ham rigs used the compactrons. Wiring around the sockets was difficult by hand. For the commercial folks using printed circuit boards, it was not a problem. The era of solid state naturally did in the tube industry. Some of the 'sweep tube' compactrons make nice amplifiers – especially if don't mind conjuring up 18v or 23v power supplies. There are loads of cheap compactrons with weird filament voltages (designed to total 120v in strings of tubes for the color TV sets) out there for 10-15% of the 12v filament versions.

Otherwise, it's the same Knight Kit Space Spanners, Lafayette Explor-Air, and similar kits that show up on Ebay regularly.

Illinois QSO Party

The mobiles were out and running. IL QSO party allows for 3 and 4 way lines and several expeditions set up on the multi-way lines and operated most of the contest period. If you work a half dozen of them, you get 18-24 counties real fast – hi hi!

There were a dozen mobiles to chase and loads of fixed stations with big signals. Most, if not all, of the IL counties were on the air – if you operated both cw and ssb. Activity shifted to 80m later at night. Reports showed contacts on 15m but conditions were not too favorable for large numbers of state side 10M QSOs.

The A index was up at 12 to 15 during the contest but it didn't seem to slow down things too much.

From the 3830 contest reflector:

AD4EB mobile 982 cw qso

This was the first time we participated in the ILQP. We found that operating mobile in Illinois this time of year has it's challenges. Some of the gravel roads we took were very rough, and I had a tough time getting my fingers to hit the correct keys. There was a lot of farm equipment on the roads out harvesting the corn which caused small delays, as well as an Amish carriage and occasional ducks chickens and roosters running around. Seeing these things made the rough roads interesting.

The strongest DX signal (on 20m and 40m) goes to OM2VL, with 16 QSOs.

Thanks to everyone that worked us and followed us thru our 22 counties.

Many thanks to my wife Melody, for spending her time driving me all over Southern Illinois. Her highlight of the trip was the incredible sunset over the cornfields, it was spectacular.

73 - Jim - AD4EB and Melody - KI4HVY

K5YAA - fixed – OK 171 cw 89 ssb

Plenty of activity to keep an op in the seat of his van. Made all the QSOs with my mobile station as don't have the base antennas all up yet. Nil on 15 and 10 as I was expecting but IL is close enough to Oklahoma that 80 produced several

Qs even on SSB! That historically nasty piece of bandwidth seems to have been cleaned up in these past few years. Plenty of room to move around it seemed.

Thanks to several mobiles who covered the state very well. Captured several new counties in my quest for USA-CA. Numerous fixed stations and several /P setups on outrageous numbers of county lines. Used a pencil and pad to write down most as I don't type fast enough to get all the QSOs entered as fast as sent or spoken.

Thanks to the organizers - a good job getting out the activity.

73 - Jerry K5YAA

W3DYA – fixed – TX - 56 cw

Casual effort to give contacts to IL Ops in return for the many contacts I've received while mobile in QSO parties. I miss the times I was mobile in ILQP! Fighting pileups on the other end isn't nearly as much fun as being there! Lots of activity and very good CW ops.

73, Norm, W3DYA

ARRL Mobile Operations Policy

The ARRL Executive Committee has adopted an updated Policy Statement on Amateur Radio mobile operation. While agreeing that driver inattention is a leading cause of auto accidents and that concern over driver distraction "is not unreasonable," the policy cites Amateur Radio's 70-year history of two-way mobile operation as evidence that such radio use does not contribute to driver inattention. The policy points out that Amateur Radio operation differs from cell phone communication, in part because the device need not be held to the face to listen, no text messaging is involved, and mobile ham operators only need to pick up a microphone to make "brief and infrequent" transmissions.

Prompting the policy update is the 2012 federal law "Moving Ahead for Progress in the 21st Century" or MAP-21, which requires states to enact and enforce statutes that prohibit "texting through a personal wireless communications device while driving" in order to qualify for federal grants to support a state's program. The League "encourages the use of the language in MAP-21 in state statutes and municipal ordinances dealing with mobile telephone and mobile text-messaging limitations," the updated policy states.

Many states already have statutes in place that restrict the use of cell phones and other communication devices to a greater or lesser degree, and several exempt Amateur Radio. A lot of these laws predate MAP-21, however, and because MAP-21 permits no specific exception for Amateur Radio operation, some may need to be revised in order to comply with its requirements. The ARRL is urging states or localities to adopt motor vehicle codes that narrowly define the class of regulated devices, in order to exclude Amateur Radio specifically.

"Given the necessity of unrestricted mobile Amateur Radio communications in order for the benefits of Amateur Radio to the public to continue to be realized, ARRL urges state and municipal legislators considering restrictions on mobile cellular telephone operation and mobile text messaging to narrowly define the class of devices included in the regulation, so that the class includes only full-duplex wireless telephones and related hand-held or portable equipment," the League policy recommends.

The ARRL policy suggests statutory language for state and local motor vehicle codes that defines a "personal wireless communications device" as one through which "commercial mobile services, unlicensed wireless services, and common carrier wireless exchange access services are transmitted." This would include such devices as cell phones and anything used for text messaging or paging, but the suggested wording specifically excludes "two-way radio communications equipment, such as that used in the Amateur Radio Service."

For states or localities considering banning all but hands-free cell phone use, the ARRL recommended wording that would prohibit the use of a personal wireless communications device "in any manner" while driving, unless the motorist is using hands-free capability. The suggested statutory language would not apply to anyone using the device while the vehicle is parked or "to contact or receive calls from an emergency response vehicle or agency."

ARRL CEO David Sumner, K1ZZ, addressed the issue in his November 2013 QST "It Seems to Us" editorial, "Distracted Driving Legislation: Proceed with Caution."

--

from: ARRL Newsletter , ARRL, Newington, CT

New York QSO Party

Wow! Another good one with mobiles and fixed stations all over the bands. I think most counties were on the air – either SSB or CW or both. County Hunters WB2ABD, NT2A, N2CU were out and about with other mobiles zipping through the counties. Ten meters was open and some went up there for the extra contacts. 15 was good as well but many stuck on 20M most of the day, and of course, there was lots of activity on 40m later in the day.

During the day, the IA and SD QSO Parties, as well as the 10-X CW event were going on, so there were lots of stations to work.

NT2A ran the last county here (Bronx) for N4CD in NY during the contest, so it was a good one for me.

Hope you caught what you needed. There were lots of spots going by but I'm sure many mobiles/counties were not spotted. Sometimes you just have to dig them out yourself! Hi hi.

From the 3830 reflector.

W2SO multi op mobile 376 cw 472 ssb qso

ops: AA2ZW AG2AA KA2DDX KC2DZT N2BND N2GDU N2WLS

Better than last year! Strange propagation mid-day led to a rush on the low bands later. Lots of fun and a great club effort with a good mix of new and seasoned ops.

K2QY multi op mobile with KM2O 103 ssb qso

Limited effort after morning ARES meeting. Operated in Orange, Sullivan, Ulster, Greene and Albany on the way back.

N2CU mobile

Two weekends in a row of mobile contesting = FUN! I operated 6 of 7 scheduled counties; NY counties are big, plus good friend WB2ABD was covering the last one I was going to do. I felt operating the high bands to give our DX and west coast friends some QSOs was more important and it allowed me to double back a couple of counties to operate 80/75m. Surprised to work WA6KHK on 10m CW although I checked several other times and it had no activity. 15m was a pleasant surprise too; sounded dead until I called CQ and signals came booming in.

Kudos to the special ops that nabbed me at least once in every county: N4PN, NW0M, OM2VL, WA3HAE and WN4AFP.

I appreciated all the thank-yous for being out there mobile from Saturday's participants and also from many PA stations for last week's.

A big shout-out to N2ZN and NW2K who coordinated the event and to ALL who participated!

K3/100, Eliminator screwdriver, N1MM (legacy), 24 oz. coffee, McD's cheeseburgers and a can of peanuts.

73,
Tom N2CU

W2M multi op mobile

W3NO (Doug) is from Cecil, PA and AD8J (John) is from Asheville, NC. We try to combine forces to operate both the PA and NY contests. This year we decided to try going mobile instead of our usual M/M operation from YAT with wire antennas. Our plan was to hit 9 counties, and then repeat 3 of them on 80 meters after dark. We allocated 60 minutes for each county visit and were able to stick pretty close to that schedule. We did have some rain during the day with pretty heavy rain the last two hours. At least by then we were on the Interstate and heading back to the hotel in Olean. The shack was a 2008 Honda Accord with Hamsticks on a custom roof mount. The rig was a Kenwood TS-480SAT driving a Heathkit SB-220. Power was supplied by a 3.6 KW generator mounted on a trailer hitch platform. Everything worked well and we never had to employ any of the backup gear that we carried. We had an eyeball with K8MR/M in Tompkins County and were able to chat and take some pictures. Thanks to everyone that kept working us as we changed counties. It's always interesting to note that many times the QRP stations are stronger than the fixed stations. It's also amazing at the number of EU stations that can easily beat out many US stations in the piles.

N2ZN mobile 945 cw qso

Another successful year mobiling in the NYQP. This year, NW2K joined for the trip which enabled us to share driving and operating responsibilities, which allowed us to be on the air for the full 12 hours, and moving continuously. Thanks to Dean for joining me this year; in addition to being a great operator, he obviously has a high tolerance for BS to sign up for a trip like this one.

We had no major equipment problems, just a small RFI problem with the CAT control cable for the radio, so we abandoned the CAT control for the duration and made band changes manually. No other equipment hiccups otherwise.

In past years, I never had an 80 meter antenna, so this year, I think adding

one to the setup. We also had a screwdriver antenna that was left tuned to 20, and the 80/40 antenna hooked to a coax switch allowed for band changes without having to retune anything, so that probably sped up the show a bit.

No major issues out on the road, either-we managed to avoid deer and state troopers; the only encounter we had with a pig was an ACTUAL piglet running across the road upon our entry into Madison County-we stopped in the nick of time to avoid turning him into sausage patties.

We are a bit short on mults because we spent most of the time CQing and not tuning the bands much; we also decided to forget about SSB, because with less efficiency on SSB from this setup, CQing would not really work too well, and the overall rate wouldn't be as good by tuning and working people on SSB, as opposed to running on CW for twice the points. We are not at all displeased with the final score.

Thanks to all who called us this weekend, especially those who stopped by for multiple QSO's as we changed counties and bands...calls like N4PN, K1ZZI, NW0M, K2SSS, W2FU/0, N2LQ, K2ZR, WA2VYA, W5ASP, AA2U, OM2VL, DL5ME, DK2OY, and many others come to mind here.

Also, congratulations and thank you to the other mobiles and rovers who took to the roads this weekend to make the NYQP experience that much better for all of us...guys like N2CU, WB2ABD, W2LC, NT2A, WJ2O, W3OAB, AK2X, W2M, K8MR, and others for putting some rare counties on the air.

We intended to put 22 counties on the air, and ended up doing that, but we added one that we weren't supposed to go to because of a wrong turn (Yates), and missed our final planned county (Livingston) because we ran out of time to get there. We ultimately did end up in Livingston to drop Dean off at his house, but after the contest ended (I'm sure that doesn't make anyone happy who missed Livingston).

We worked 36 out of 62 counties, and ended up activating a number of counties that we never worked ourselves.

Looking forward to next year already! Thanks again to everyone for all of the QSO's.

73, Ken N2ZN & Dean NW2K

- - - - -
note de N4CD: Ken, N2ZN lives in Wayne County, NY – fairly rare and is quite active in contests and available for a sked if you need that county.

- - - - -
W2LC mobile 233 cw QSO

Glad I made the long drive to Clinton county, I had a bit of a pileup going on 20m. I'm having some QSL's made up with a popular NNY attraction. What you ask? The "Golden Knight" of course, located outside the hockey arena at Clarkson University. I went to the hockey game as I usually do, but they got whipped by Vermont. Oh well still fun to go.

I stayed a bit ahead of schedule in order to spend extra time in Clinton county. I'm disappointed with Lewis county, not too many Q's there. I stopped in a nature park just over the county line, but it must not be a good spot.

My best QSO total and best multiplier total, and most counties worked too.

If I was weak that's because I was running 5 watts using FT-817, along with 40m and 20m ham sticks. It all works pretty well though. I taped 4 radials to the outside of my car, using black wire and black duct tape, that helps a lot. I got a couple of funny looks when I stopped. At Clarkson that may not be the nerdiest thing that you see. Clarkson University is primarily an engineering school, need I say more?

Both my son and youngest daughter are Clarkson graduates. My daughter has some good stories on the looks she gets when she tells someone she is an electrical engineer.

Activity seemed pretty good, I had to move around a bit whenever I thought I was getting covered up.

Thanks for all the QSO's, I had 26 DX QSO's, SP9LJD in 4 counties. About 450 miles of driving including the trip home. I drove to the Oswego/Jefferson county line before the contest so I could get to Clinton county earlier. It all

worked out well.

73 Scott W2LC

K8MR mobile

Helped along by a plea by NW2K, my wife & I headed up to New York for the weekend to visit former neighbors in Pittsford, and for me to spend a day driving around the Finger Lakes and making a few QSOs in the NYQP.

I did this two years ago, and it was a beautiful way to spend a day. Unfortunately this year was cloudy, windy, and short but frequent rain showers. But the radio was good. I operated only while parked, using the "33 Foot HamStick" on 40 and 15, and the seven foot HamSticks on 20 and 10. Actual operating time was about 5.5 hours, 3.5 hours of driving and putting the antenna up and down (less than 10 minutes per operation), and I was back home by 0030Z to be sociable.

Conditions were good. Forty was good at the start, but not much activity on 20. By mid afternoon that had switched, excellent short openings on 20 to places as close as Ohio and WPA, while 40 meter activity seemed to drop off somewhat. It was good to have a number of DX stations following me around - I hope more EU will take up chasing us relatively weak mobiles around the counties in our QSO Parties here in the States.

Neatest QSO: while approaching Ithaca I heard a car horn and noticed a car parked alongside the road with a couple of whips. Sure enough, it was AD8J and W3NO, operating W2M. I pulled over, had eyeball QSOs, and one QSO on 20 CW for the TOM multiplier.

The weather added injury to insult shortly after. While set up in a city park at the south end of Cayuga Lake, a storm blew in. I noticed the antenna whipping a bit, but then a bit later I QSY'd to 15 meters to find a horrible VSWR, with an antenna laying on the ground with the DK9SQ fiberglass mast broken where it passed through the tripod mount. So I packed up and proceeded home, stopping for a few QSOs in Cayuga and Seneca counties on the way home.

It was still a good trip. Next time if it's raining maybe I'll stop at a few of

the 20 wineries (and couple of brew pubs) I passed on the way.

73 - Jim K8MR

WN4AFP - fixed – SC 108 cw 41 ssb qso

I almost doubled my score from last year. I had fun with the NYQP! As always, the mobile stations made me stay in my chair... Thanks to all of them that worked me...K8MR, WB2ABD, N2ZN, N2CU, WJ2O, NT2A and W2M. I missed only 9 of the 67 counties. Looking forward to next year. 73's Dave WN4AF

OM2VL – fixed – DX 153 cw 26 ssb 2 dig QSO 56 mults

Thanks for the mobile activity:

N2ZN 15/12 (QSO/Cty)

W2M 11/8

N2CU 10/6

NT2A 7/5

NJ1F 7/6

K8MR 5/5

W2LC 3/3

WB2ABD 3/3

WJ2O 3/3

10/15m was open here, tried SSB RUN, but unfortunately only 1 SSB QSO on 15m and nobody on 10m. On Sunday I was QRV during and before the IL QP - I made on this band many QSOs from NY - thanks MURPHY :)

73 Laci OM2VL

Ten Ten CW Contest

In the fall, the 10-10- International Group holds cw, ssb and digital contests on different weekends.

I was listening a bunch on 10M during the contest period. Ed, KN4Y, barely peaked above the noise here for a few minutes the whole time. I worked a couple other stations but it was slim pickings. (heard SC, worked south TX). K0NM in south TX near Houston, near Houston, with a big signal and big antennas, worked over 250 stations on 10M in the test. Wow. One fellow in OK worked 38. The only way I learned this was talking to the Ten Ten President at the Texoma hamfest a week after the event!

You need to be an active dues paying member of 10-10 to send in your score to the 10-10 group for listing and awards, so no one bothers to report on the 3830 contest reflector. You can't even see a list of the winners until the print issue comes out. . That sort of stifles activity and gives no incentives for the 'contest groups' who add up all the points for all the contests to compete to even enter or participate.

It was pretty much a 'dud' this year at least at this QTH.

On the Road with N4CD II

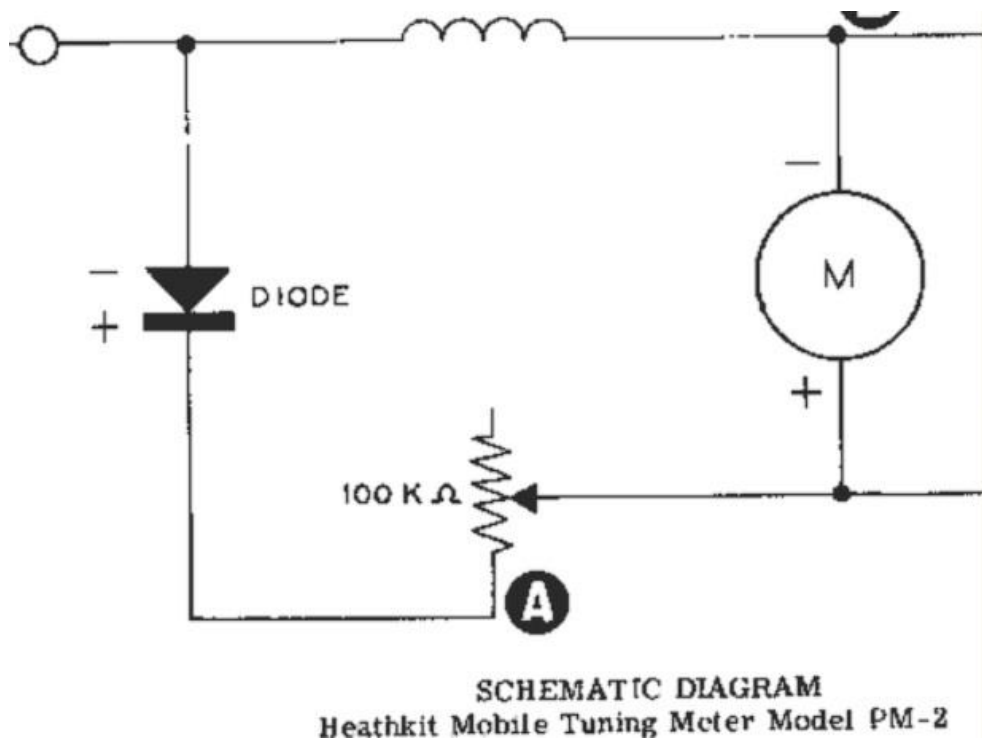
The Texoma (OK) hamfest is held at the end of October each year. It's a little one not too far from home. I zipped up there to Ardmore, without radio, to check out the goodies for a few hours. I didn't find anything I 'had to have' but a few things followed me home. They were so cheap I couldn't resist.

Here's an oldie from the way back days of mobile operation. It's a Heathkit Mobile

Field Strength Meter used to tune your mobile transmitter/antenna for maximum power. Way back when in the tube days, many mobiles had antenna matcher set ups (many manual or automated coils, usually inside the trunk, at the base of their 'whip' antenna, and they had to tune the final stage of their transmitter for max power. You'd put this on your dashboard or similar place, with a short whip out the top to pick up your signal.



This is a Model PM-2 Field Strength Meter sold in 1960 to 1975 era. In the 60s, the price was \$13 for the kit. The unit is about 2.3 x 2.6 x 3.5 inches and weighs about 1 lb. Here's the schematic:



There is not much to it! There's a 0.01 cap across the meter which didn't make it in the diagram. Claimed sensitivity is 0.3v RMS from 100 KHz to 230 MHz. The earlier version, the PM-1 was sold for 'marine use' and had a chrome front panel and a plastic case. When HF mobile took off in the 50s (it was limited to 10m and above for a long time!), they came out with the PM-2.

It seems later they offered a HD-1426 version in a different case to match different equipment styles.

Another item I bought was a cigar box full of old style mica capacitors. This is the way caps were made back in the 20s and 30s. Big gigantic units that would have screw contacts at each end, or a solder tab.



Mica Caps circa 1920s - \$1/box

Iowa QSO Party

There were mobiles out – but I heard no one other than K0PC – maybe it was skip distance. 40M was horrible until evening. Worked WI0WA fixed station and N0SM and W2FU/0 and KB0XY and that was about it for N4CD at the TX QTH. Meanwhile the NY QSO Party was in full swing, there were DX stations in a Worked All Germany contest all over the lower part of the band, and the SD QSO party was also going on.

From the 3830 contest reflector:

W0GXA mobile 86 cw qso

I've had better contests. I've been ill for two days and almost stayed home. I drove across the state to put a few counties on the air for OM2VL (to finish off Iowa) and SM7ZDI. My logging laptop computer failed half way through the

contest but... I had a backup laptop. I knocked off early so I could come home and take a nap. 560 miles on the car....

N9JF mobile

This was a shakedown cruise for Sunday's ILQP. Unfortunately my schedule got thoroughly hosed and I was able to run only two counties not the planned six or seven. . I also discovered that I was apparently inaudible on 20 meters. I will have to try to fix that on Sunday morning . Fifteen and forty seemed ok, didn't hear anyone on 80 but that wasn't a surprise during the day. I didn't hear a lot of activity from IA except for K0PC/M, N0SM, K2DSW and a couple of others. As usual, calling CQing stations on SSB from the mobile was a total waste of time”

K0PC mobile 526 cw qso

Many thanks to all who participated in the IA QSO Party. I had 179 unique calls in the log. Many stations had multiple contacts but Roger, K0MPH was outstanding with 27 QSOs. Tied for second were K5KPE & N6MU with 16 each.

Thanks to the Ottumwa ARC for sponsoring the IAQP for many years. I look forward to another trip across my home state in 2016.

73,
Pat K0PC

W2FU/0 – Hardin IA – fixed - 41 cw 20 ssb

Trying NYQP and IAQP at the same time.....not as much activity from IA as I expected, so spent more time chasing the NY guys around.

Fun in any event,

K3 - 100W and two dipoles. 400' beverage
Jeff

N6MU – fixed – CA - 42 cw 8 ssb 32 mults

Thanks to K0PC/M who kept it somewhat interesting the whole time. Worked him 16 times.

Never heard any of the IA JOTA stations. 73...

John, N6MU

W1END – 17 cw

Iowa is a good shot from NH and signals were mostly pretty good. Score includes WA0DX bonus. Lots of activities this weekend including leaf raking etc. Thanks to everyone.

Eldon - W1END

OM2VL – fixed – DX

I found only 2 mobile: K0PC/M 16QSO/15 counties , W0GXA/M 6/6.

My BIG THANKS to Bob - W0GXA who added me last 4 missed counties and Pat – K0PC who gave me the last one: Palo Alto. I really appreciated it!

73 Laci OM2VL

Solar News

First solar storm from huge sunspot reaches Earth and knocks out satellites - and more could be on their way

Solar radiation knocked out some radio communication on Earth yesterday

It came from a giant sunspot seen on the surface of the sun recently
Sunspot AR12192 is 14 times larger than Earth and almost as big as Jupiter
The Met Office tells MailOnline it might be the largest sunspot in 25 years
It is so big that it can be seen in images of the sun from Earth's surface
This particular flare from the sunspot was brief but strong
It follows three days of severe storms on the sun

Space Weather Prediction Center forecaster Christopher Balch, meanwhile, said the flare affected radio that uses part of the upper atmosphere. That includes some but not all radar and plane systems as well as amateur radio.

Geomagnetic storms are more disruptive now than in the past because of our greater dependence on technical systems that can be affected by electric currents.

Mr Balch said the storm briefly was rated as strong for affecting Earth radio systems but then dropped to minor levels.

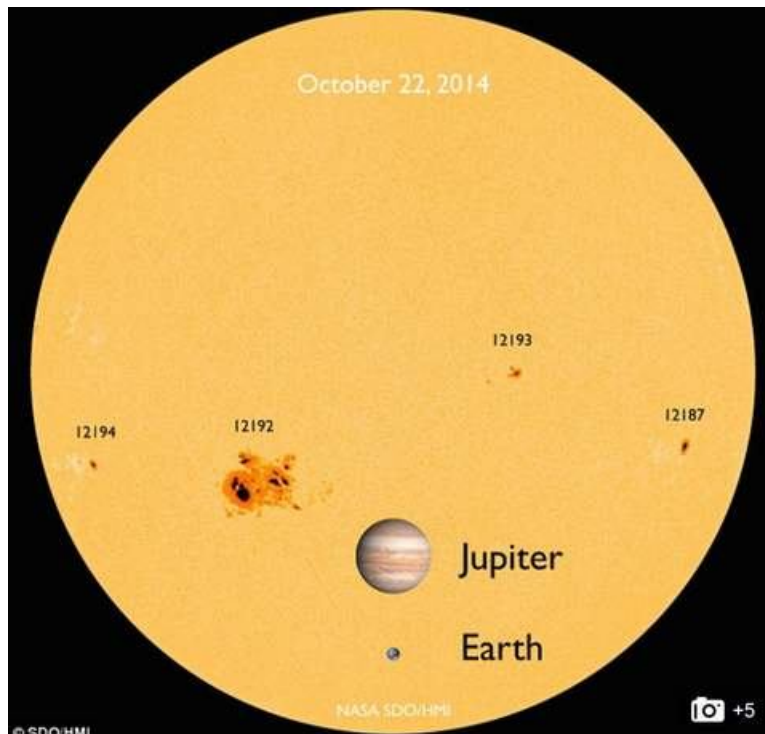
The event followed months of near-silent activity on the sun before the huge flare erupted from a sunspot 14 times bigger than Earth.

A spokesperson for the Met Office Space Weather Operations Centre told MailOnline it may be the biggest sunspot for 25 years.

According to experts at thesuntoday.org, 'As of Oct. 22, 2014 (11 UT) the region's trailing spots have an area of 2410 MH or millionths of a visible solar hemisphere.

'The largest up until now had been AR11967 on Feb. 5, 2014, measuring 1580 MH. MH is a standard measure used by astronomers for area.

'Just to provide some scale, the surface area of Earth is 169 MH - this means that AR12192 is 14 times larger than the surface area of Earth.'



Yesterday's flare was an X1.6, which is a million times the combined yield of every single nuclear weapon on Earth.

'The sun erupted with another significant flare today, peaking at 10:28 am. EDT on Oct. 22, 2014,' revealed Nasa.

'Nasa's Solar Dynamics Observatory captured images of the event, which occurred in the lower half of the sun.

'This flare is classified as an X1.6 class flare.

'X-class flares denote the most extreme flares.

'This is the third substantial flare from the same region of the sun since Oct. 19.'

Dr Young of Nasa's Goddard Space Flight Center added: 'It continues to grow in size and complexity.'

Read more: <http://www.dailymail.co.uk/sciencetech/article-2803837/What-happening-sun-Monster-storms-solar-surface-result-sunspot-big-EARTH.html#ixzz3GzFjmskU>

later update:

The biggest sunspot on the face of the sun in more than two decades unleashed a major flare on Friday (Oct. 24), the fourth intense solar storm from the active star in less than a week.

The solar flare occurred Friday afternoon, reaching its peak at 5:41 pm. EDT (2141 GMT), and triggered a strong radio blackout at the time, according to the U.S. Space Weather Prediction Center. The flare erupted from a giant active sunspot known as AR 12192 and was classified as an X3.1-class solar storm — one of the most powerful types of solar storms on the sun — but it is not the first time the sunspot has made its presence known.

"This is the fourth substantial flare from this active region since Oct. 19," NASA spokesperson Karen Fox wrote in a status update

Indeed, on Sunday (Oct. 19), the sunspot fired off a major X1.1-class solar flare, then followed it up with an intense M8.7-class flare on Wednesday (Oct. 22) that was followed that same day by an X1.6 event.

Sunspot AR 12192 dwarfs the Earth and is comparable to Jupiter in its size, according to solar astrophysicist C. Alex Young with NASA's Goddard Space Flight Center, who described the sunspot in his blog *The Sun Today*.

The sunspot is the largest of its kind since November 1990, and is larger than a monster sunspot that spawned a series of major solar flares over Halloween in 2003.

South Dakota QSO Party

K7RE was the sole mobile worked on cw in the SD QP. Without him, there would not have been much of a QP. In fact, I worked no fixed stations in SD nor saw any spotted nearly all day on Saturday! Finally two fixed stations, one in Pennington (K0JV on cw) and one in Spink, KD6CP, on 20/40 ssb, showed up in the evening. It ran to Sunday for even more opportunities with W0SEB showing up on Fall River/Custer line.

From the 3830 contest reflector.

OM2VL fixed – DX 8 cw 8 ssb qso

The only mobile was K7RE/M - 9 QSO / 9 County . I worked also with K0LEW on SSB.

Both days I called loooooooooooooong time CQ SD QP - without any station back from SD ...

73 Laci OM2VL

Awards Issued

USA-CW # 137	BarryK2MF	10.18.14 ,
Bingo #360	Kirby W8DCD	10.13.14,
Bingo #361	Scott, KA3QLF	10.13.14,
Bingo II #95	Jack, WD4OIN	10.23.14,
2nd Time #429	Mary AB7NK	10.3.14,
2nd Time #430	Neil, K7SEN	10.4.14,
2nd Time #431	Barry, K2MF	10.18.14
2nd Time #432	Sharon, N0LXJ	10.22.14,
3rd Time #243	Jack, WD4OIN	10.10.14,
4th Time #11	Tom N4RS	10.17.14,
County Challenge Level 17	Hollis, KC3X	10.1.14,

Upcoming Events for County Hunters

Only one QSO party in November – but a few contests to be aware of for QRM's sake or for catching some new counties. Things get very very busy during Sweepstakes and DX contests.

ARRL November Sweepstakes

Serial, category, call, check, ARRL/RAC sec

www.arrl.org/contests

Nov 1, 2100Z - Nov 3, 0300

Kentucky QSO Party

RST and KY county or S/P/C

www.wkdx.com

Nov 8, 1400Z - Nov 9, 0200

ARRL November Sweepstakes

Serial, category, call, check, ARRL/RAC sec

www.arrl.org/contests

Nov 15, 2100Z - Nov 17, 0300

CQ World Wide CW Contest

RST and CQ zone

www.cqww.com

Nov 29, 0000Z - Nov 30, 2359

Future Planning

MI Mini is April 23 - 24 - 25th, 2015...

The 2014 Michigan Mini was hosted by Ed, K8ZZ and Joe, W8TVT and was held at the West Bay Beach - Holiday Inn Resort 615 East Front Street • Traverse City, Michigan

49686 Phone: (231) 947-3700 • Fax: (231) 947-0361 Toll Free: (800) 888-8020) It will be held at the Holiday Day Inn West Bay Beach Resort again in 2015 with room rates of: \$89.95 plus tax per night if reserved by March 27th, 2015.

Date for 2015 MICHIGAN MINI is April 23 - 24 & 25th..

On Saturday at 10:00 AM in Hospitality Room - Jerry, W0GXQ (MN) and Mike, NF0N (NE) will have a presentation on SSB and CW team operation

That's it for this month! See you next month.